

FOR GREAT MANSION

LOPO TERRACOTTA FACADE PANELS

(English Version)

www.lopochina.com

LOPO TERRACOTTA FACADE PANELS

NO.5



LOPO[®] Terracotta Facade Panels

LOPO INTERNATIONAL LIMITED

ADD: Yintang Industrial Zone, Gunong, Changtai, Fujian, China

Email: lopo@lopochina.com

TEL: +86 1596 0810 759

TEL: +86 592 5073 725

FAX: +86 592 6084 019

www.lopochina.com

Why Terracotta Facade Panel?

Natural stone, aluminum panel, glass are very common materials in application of architectural facade cladding projects. However, terracotta facade panel, debuted in the late 1980s, is just like a rising star in this area. What are the comparable strengths of terracotta panel?

Green and Environment-friendly

Terracotta panels raw material is natural clay, and the terracotta panel is colored by making use of the clay's natural color and luster, with very little or no dyeing chemicals added. Mono color before, but colorful after the kiln firing, the terracotta panels are with diverse colors, the color and luster are natural and in rich texture, and it will never fade, which well meets the modern architecture's design demands for mainstream colors. Meanwhile, the products are without any radiation and can be 100% recycled, which are indeed green construction materials friendly to the environment.

Excellent Building Performance Index

Terracotta panel products are produced through processes of strict raw material processing, high pressure extrusion forming, and 1,200°C high temperature burning, with very stable and even physicochemical properties. As curtain wall materials, terracotta panels have features of fire safety, acid and alkali resistance, scratch and wear resistance, and high compressive strength. Even placed in environments of ultra-high temperature or of low temperature and frost, the terracotta panels can keep great stability performance.

Open System, Thermal and Sound Insulated

Terracotta panels have a specific open installation method formed by transverse seam lapping, which is good for protecting the building's main structure from bad weather and air pollution's erosion, and can prevent the wall space from deposits to maintain the curtain wall's beauty; meanwhile, an air layer which can breathe free between the surface material and the wall, with the addition of the hollow design of the terracotta panel product itself, can effectively cut off heat conduction and improve the building wall's acoustic performance, and the whole system has thermal insulation, sound insulation, ventilation, and moisture removing functions, which can effectively improve the indoor temperature environment in Summer to eliminate the heat bridge effect and save energy consumption.

Waterproof and Anti-collision Design, Pressure-proof and Anti-seismic

Terracotta panels are with splicing design for installation based on the Rain Screen Principle, and a special design using EPDM gaskets connecting the parting between interfaces on both ends, can effectively reduce rainwater invasion, prevent terracotta panels' lateral movement, and prevent the collision between adjacent terracotta panels. Meanwhile, it uses flexible insulation spacers to separate terracotta panels from hanging articles, to separate hanging articles from cross beams, to improve the system's anti-seismic performance, to avoid electrolytic corrosion between different metal materials, and also to eliminate noise and distortion. The improved terracotta panel system can reach 10 degree anti-seismic performance, especially suitable for architectures having demands for wind resistance and aseismic performance.

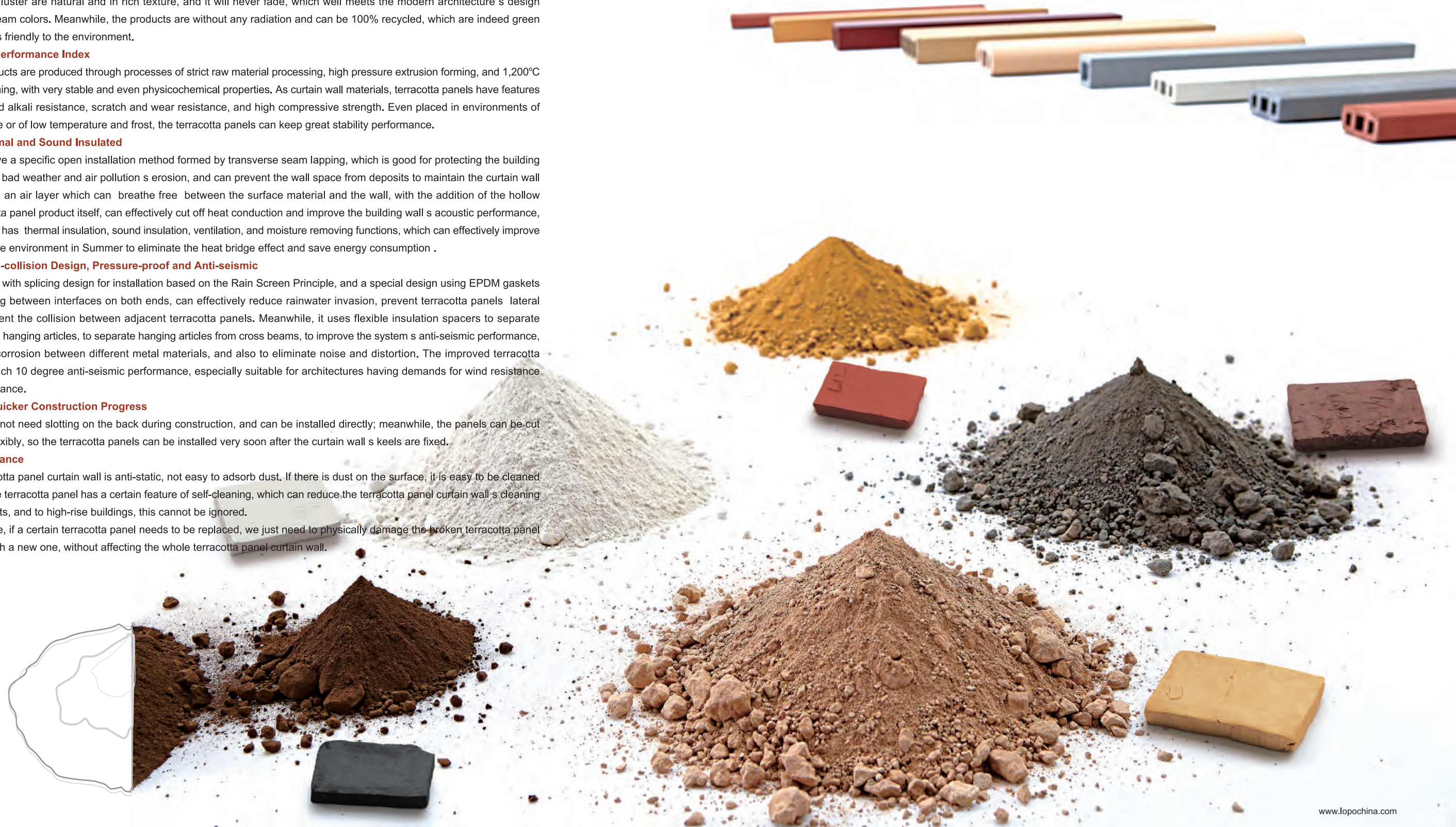
Easy Installation, Quicker Construction Progress

Terracotta panels do not need slotting on the back during construction, and can be installed directly; meanwhile, the panels can be cut at will, and laid out flexibly, so the terracotta panels can be installed very soon after the curtain wall's keels are fixed.

Convenient Maintenance

The surface of terracotta panel curtain wall is anti-static, not easy to adsorb dust. If there is dust on the surface, it is easy to be cleaned after rain wash, so the terracotta panel has a certain feature of self-cleaning, which can reduce the terracotta panel curtain wall's cleaning and maintenance costs, and to high-rise buildings, this cannot be ignored.

For daily maintenance, if a certain terracotta panel needs to be replaced, we just need to physically damage the broken terracotta panel to singly replace it with a new one, without affecting the whole terracotta panel curtain wall.



COMPANY PROFILE

LOPO China is a family-owned corporation established in 2002 by the couple Mr Xinghua Peng and Mrs Meiyu Yang. Over the past decade, LOPO China has become the major building material manufacturer in mainland China. Now we have set up 3 factories in Fujian province, which are LOPO Clay Brick, LOPO Terracotta Facade Panel, LOPO Artificial Stone.

Equipped by advanced production lines imported from Italian, excellent technical team and more than 600 skilled workers, we are capable of providing high-quality products with extensive range of colors, textures and sizes. LOPO clay brick and terracotta facade have met the requirement of ASTM/ISO standard. It s our honor that more and more of LOPO terracotta products have been applying in world-class projects like Beijing Olympic facilities and Hamburg House in Expo 2010 Shanghai.

Our products have been well-recognized by developers and distributors at home and abroad. We have established strategic partnership with noted real estate companies in China, such as Vanke, Crland, Vantong, Merchants Estate companies etc. Depending on our devoted services, qualified products and competitive prices, we have also won the approval of our distributors from Japan, Korea, Taiwan, HK, Malaysia, USA, Canada and Europe etc.

We make sure LOPO terracotta products always meet your expectation every time!



HISTORY OF LOPO CHINA

- 2002 Mr Xinghua Peng and Ms Meiyu Yang set up LOPO Clay Brick Factory and started to develop and produce clay thin brick, clay brick and clay paver by LOPO self-designed tunnel kilns.
- 2003 Ms Meiyu Yang set up LOPO Artificial Stone factory.
- 2004 LOPO clay brick product was supplied nationwide and exported to Korea and Japan.
- 2005 LOPO established the strategic partnership with noted real estate developers (Merchant Estate, Country Garden Group, CRLAND and Vanke) in China.
- 2006 LOPO set up the distribution network in China major cities.
- 2008 LOPO become the biggest production base of terracotta brick product in China. LOPO clay brick was applied in gymnasium of Beijing University of Technology, which was one of the facilities for Beijing Olympic Game.
- 2009 LOPO Terracotta Facade factory was set up in Changtai, Zhangzhou, Fujian.
- 2010 At the EXPO 2010 Shanghai, LOPO clay wall brick has been applied in "Hamburg House" of Germany as part of the theme-"sustainable urban development and ecological climate-friendly construction".
- 2011 LOPO launched its first terracotta facade panel product.
- 2012 LOPO started the 2nd phase extension of terracotta facade factory. LOPO launched terracotta floor heating system.
- 2013 LOPO sold 260,000SQM terracotta facade panel and ranked NO.1 in China.



Terracotta Material



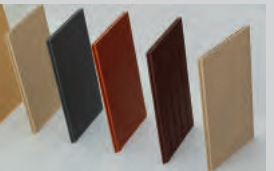
Clay Thin Brick



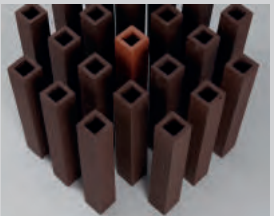
Terracotta Thin Brick



Terracotta Wall Brick



Terracotta Facade Panel



Terracotta Baguette



Floor Heating System



01 80,000 SQM Open Stockyard with Clay Material Reserve of 300,000 Tons



07 Drying Kiln (80 meters, 5 layers)



08 Crushing Equipment



03 Automatic Batching System (115 storage tanks) with Total Material Reserves of 7,000 Tons



04 Imported Molding Machines of Vacuum Extrusions



05 Firing Kiln (260 meters, 480 firing units)



06 Automatic Polishing and Cutting Line



02 Indoor Raw Material Storage Yard (150,000 tons)

WHY LOPO TERRACOTTA PANEL?

Advantages of Raw Materials

1. High quality and stable material sources

The production base of LOPO Terracotta Panel is located in Changtai County, Fujian Province, with rich high-quality clay resources around, ensuring high quality of LOPO Terracotta Panel and the product quality's stability.

2. The largest indoor and outdoor raw material yards in domestic China

High quality terracotta panels have high requirements on natural staling time of the clay raw materials (at least half a year). LOPO has indoor and outdoor material yards and warehouses covering an area of about 100,000 square meters, and each raw materials' storage can lasts for over 0.5~1 years, which ensures the natural staling time the raw materials need.

3. Completed facilities for material preparation

The company is the only terracotta panel manufacturer domestically equipped with the largest scale raw material crushing and gradation processing equipment, which ensures the clay raw materials meet strict particle fineness requirements; the company has 115 storage tanks with total reserves of 7,000 tons of raw material powder, and uses computers for fully automatic dosing; during the pre-production material storage stage, the material storage warehouse with constant temperature and humidity settings ensures the stability of various physical and chemical properties of the clay during production process, and accordingly guarantees production stability and mass production requirements to the utmost extent.

Advantages of Manufacturing

1. The longest kiln production line in domestic China

Domestically, LOPO has the longest dry kiln and roller kiln production lines (85 meters+ 260 meters). The facility has not only an extended length, but also the optimal settings to ensure the product's moist-removing and heating evenly and stably, based on the terracotta panel product's large surface feature. LOPO's roller kiln is equipped with 420 groups of low-temperature, middle-temperature and high-temperature kiln nozzles(the longest and most in domestic China), and the drying and burning last for more than 11 hours, which ensures the burnt product's various performance indicators. Especially the indicators like the terracotta panel's water absorption (3%~7.5%), and compression strength are better than equivalent products.

2. After-processing ability

The company not only possesses an automatic cutting processing line, but also has 20 independent cutting machines. Terracotta panels of unified specifications can be sent to automatic cutting processing line for cutting right after being qualified after the kiln burning process, which effectively ensures the product's precision. For some products that need special processing or have a small quantity for each size, they can be classified and processed by specially-assigned persons using independent cutting machines, which can make sure the delivery efficiency of products in different sizes in a same project processed at the same time.

3. The industry's leading production capacity

LOPO now owns key equipment including six vacuum extruders imported from Italy, two low-speed 80-meter five-layer drying kilns, and two 260-meter-long roller kilns, etc. Now LOPO's terracotta production capacity reaches 1.5 million square meters, making it the biggest production base of terracotta panels in domestic China, with the industry's shortest production cycle and with the ability to faster meet customers' requirements.

Advantages of Technology

1. Talent resources and R&D ability

Now LOPO has many experts from Jingdezhen Ceramic Institute leading the research and development of technique and technology, and a group of technicians with rich experience in extruded terracotta production. LOPO's chairman Mr. Peng Xinghua is just an expert in kiln channel design, with over 20 years' experience in terracotta-making field.

The professional R&D team enables LOPO to develop and innovate constantly. The radiant floor heating product and wood-grain terracotta panel series of products are all the industry's pioneer products. LOPO is capable to provide customized terracotta product with different shapes and dimensions.

2. Complete inspection and QA measures

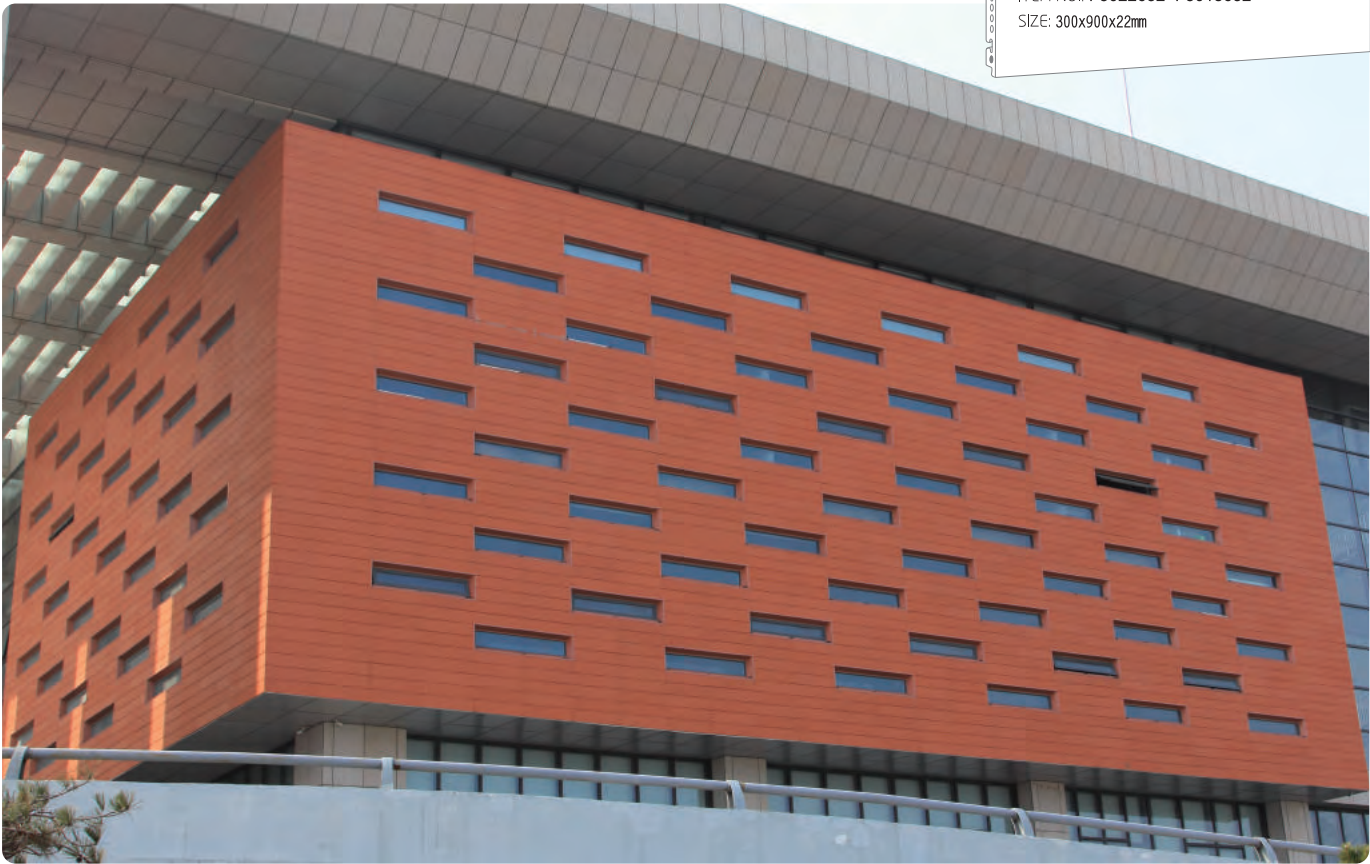
The company has set up rigorous measures for process tracking, inspection and feedback, and has also established a terracotta panel test room, to make sure the controllability and stability of the product quality. During every production stage, there are special QC staff to inspect each terracotta panel's appearance and dimensions(including indicators such as flatness, edge straightness, width dimension, etc.) ; there are special QC staff to constantly match and control the product colors, to make sure the product color consistency under stable firing temperature curve; professional QC staff will do regular inspection of various physical and chemical performance indicators, to realize all-around control of the terracotta panel's product quality.



North Weihai Station, Shangdong, China (2015)
Terracotta Panel (Natural Smooth Surface)
ITEM NO.: F3022632 F3018632
SIZE: 300x900x22mm

Contents

01	74	74-75	76-77	78-79	80	80-82	83-85	86	87	88-90	91	92-93	94-95	96-97	98	98-101	102-111
.....
LOPO Architectural Examples	Product Description	Colors	Surfaces	Dimensions	Terracotta Facade Panel	Natural Flat Series	Special Shape	Sandblast Series	Wood Grain Series	Solid Ceramic Elements	Miniature-engraved Elements	Stair Treads and Risers	Glazes Series	3D Inkjet Tile Series	Terracotta Baguette	Baguette Product	LOPO Baguette Examples



Commercial Building



Linkong Yihao Business Center, Changsha, China (2013)
Terracotta Panel (Natural Smooth Surface)
ITEM NO.: F451826
SIZE: 450x900x18mm



Commercial Building

China Technology Training Center for Children, Beijing, China(2015)
Terracotta Rainscreen/Terracotta Baguette/Special Element
ITEM NO.: F3020768 T40100768
SIZE: 300x900x20mm



China Technology Training Center for Children

The project's architectural design features multiple curving facade, visually delivering smooth linear beauty to cater to Chinese people's aesthetic taste harmony. In this project, brown terracotta panels, louvers and glass are chosen to be exterior wall materials, and the exterior walls are divided by strips in a regular way. As a result, terracotta panel facade in harmony with recessed class windows makes the entire facade in picturesque disorder but a smooth transition, which conveys modern simplicity and cultural atmosphere.

To meet the designers' demand for a smooth and harmonious facade, a great quantity of special-shaped structures are adopted for this project, such as curving wall, multiple-beam intersection, variable cross-section, which requires tailored terracotta panels and baguettes. LOPO, together with the designers and the construction team, conducted thorough research on the facade structure, and provided a custom design solution for this project. At last, LOPO has provided nearly 30 terracotta panels and baguettes with different width, thickness and curve, and more than 100 cut products of different sizes.



China Technology Training Center for Children,
Beijing, China(2015)
Terracotta Rainscreen/Terracotta Baguette/Special Element
ITEM NO.: F3020768 T40100768
SIZE:300x900x20mm



Science and Technology Park of Xin City,
Changsha, China (2013)
Terracotta Panel (Natural Smooth Surface)
ITEM NO.: F501801 F501886
SIZE: 500x1200x18mm



Jiangsu Sci-tech and Financial Plaza, Nanjing, China (2015)
Terracotta Panel (Natural Smooth Surface)
ITEM NO.: F301877
SIZE: 300x600x18mm

The elevation is designed to be a perfect combination of glass curtain wall and terracotta facade panels, reflecting the design concept that emphasizes the simple and flowing lines of modern buildings' elevations. The overall style is formal and reserved, conveying a sense of trustworthiness, so that it is very suitable for financial enterprises.

The brown terracotta panels applied on the surface of the business towers are contrasted with light and transparent pale-blue glass curtain walls in terms of weight, color, and landscape. The annex buildings are mainly applied with creamy-white terracotta panels, with light-brown terracotta panels sporadically used as linear decoration. Therefore, the deep colors and light colors contrast with each other, making the building elegant and harmonious.





1. Nanhu NO.1 Tower, Changsha, China (2015)
Terracotta Panel (Natural Smooth Surface)
ITEM NO.: F3018001
SIZE: 300x900x18mm





Pintan Jinjing Bay CBD, Fujian, China (2015)
Terracotta Panel (Natural Smooth Surface)
ITEM NO.: F5524884/F6024884
SIZE: 557x900x24mm 600x900x24mm



Jingdezhen International Ceramic Art Center,
Jiangxi, China (2013)
Terracotta Rainscreen / Terracotta Baguette
ITEM NO.: F301869
SIZE: 300x900x18mm



Shangfenggang Times Plaza, Chengdu City,
China (2014)
Terracotta Panel (Natural Smooth Surface)
ITEM NO.: F301869 / F301863 / F3018770
SIZE: 300x900x18mm

It is a large leisure and shopping center. The architectural designers select terracotta panels of three colors (coral red, dark red, brownish red) that belong to the same category, and randomly collocate and apply those panels to the lower facades of the buildings. Red colors create warm and pleasant atmosphere for the plaza, meeting the color preference of the people in Sichuan Province. Red colors of three different intensities vitalize the building facades, and go well along with the gray color of the building's higher external walls and glass.





Shengshi Jiayuan, Chengdu, China (2014)
Terracotta Panel (Natural Smooth Surface)
ITEM NO.: F301865
SIZE: 300x900x18mm

Business Plaza



Zhongjian Happy City, Zunyi, Jiangxi, China (2014)
Terracotta Panel (Wood Grain Surface)
ITEM NO.: FW3018617
SIZE: 300x900x18mm

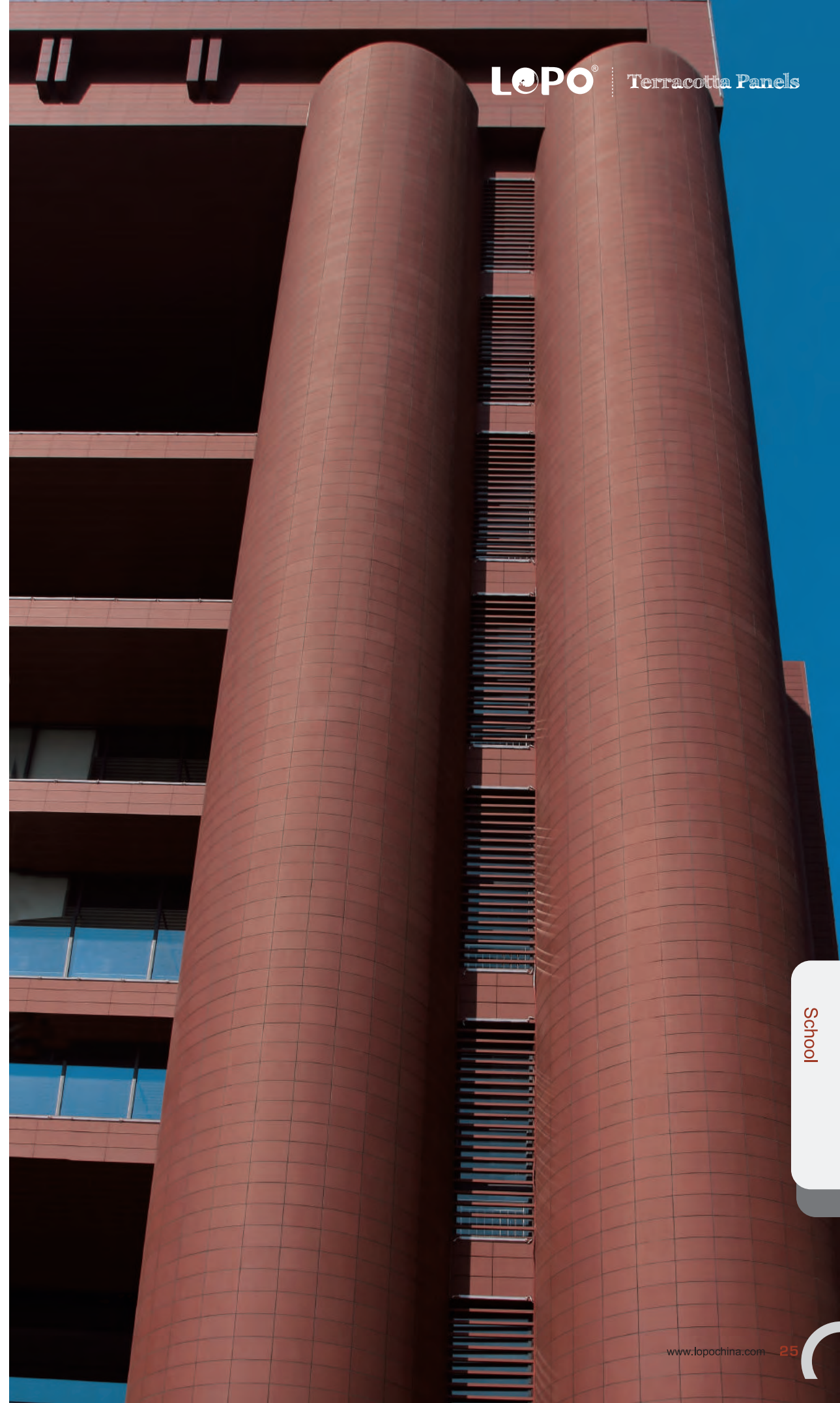




Hebei University's Library (2015)
Terracotta Panel (Natural Smooth Surface)
/Special Element (Curved Panel)
ITEM NO.: F3322637
SIZE: 330x900x22mm

Hebei University's Library

Hebei University's library is one of numerous educational projects utilizing LOPO terracotta facade products. Featured with classic educational building style, the building's exterior walls are clad with deep red terracotta rainscreen and louvers, in harmony with the other surrounding red brick building built previously. The design of the front of the building is inspired by Chinese ancient letters. Two huge columns on either sides of the front of the building are clad with curved element panels, with terracotta louvers in between columns. Such design makes the exterior walls become integral and uniform and easy for natural ventilation and daylighting.



Yucai Junior High School of Qingdao Economic Development Zone

To avoid the terracotta curtain walls from being too stiff-looking, the designers choose LOPO wood-grain terracotta tile to achieve the effect of a fairy-like forest hut. Furthermore, the designers design light-red and sandy-yellow tiles both in four different widths: 150mm, 250mm, 350mm and 400mm. Those panels of different colors and widths are randomly arranged to create very natural and rick wood-grain patterns on the surface of the building's elevation, therefore making the building lively.



Yucai Junior High School of Qingdao Economic Development Zone, Shangdong, China (2013)
Terracotta Panel (Wood Grain Surface)
ITEM NO.: FW6018217 F3018003
SIZE: 150/250/350/400 x1000x18mm
300x900x18mm



Qingdao Westcoast Vocational Education Group
Training Center, Shangdong, China (2013)
Terracotta Panel (Natural Smooth Surface)
ITEM NO.: F4521634 F45210031 F4521889
SIZE: 450x900x21mm

Qingdao Westcoast Vocational Education Group Training Center

For the buildings, the designers mainly use creamy-white terracotta panels, supplemented by red terracotta panels. The red terracotta tiles are used as ornaments in some specific areas of the buildings on an irregularly basis, such as bay window, entrance, corridor. The combination of red and white terracotta panels and light-blue glass enable the buildings to generate harmonious and pleasing colors, which brings elegant and solemn temperament specific to traditional education projects, while delivering positive and bright atmosphere.



NO.1 Middle School of Xi'an High-tech Zone (2014)
Terracotta Panel (Sandblast Surface)
ITEM NO.: FH6025632
SIZE: 600x1200x25mm



In case of applying terracotta tiles of the same color throughout the whole elevation, special attention must be paid to different structures of the elevation, such as window frames, beams, edges, and wall frames. So terracotta tiles of different dimensions can be used to maintain the uniformity and consistency throughout the elevation. Take the classroom building of Jinjiang No.1 High School as an example, creamy-white flat terracotta panels are used for this building. 300mm wide tiles and 450mm wide tiles are respectively used in the most areas of the elevations and the window frames. The overall building is visually consistent and symmetric.



The Classroom Building of Jinjiang No.1 High School,
Fujian, China (2012)
Terracotta Panel (Natural Smooth Surface)
ITEM NO.: F3018003 F4518003
F3018635 F4518635
SIZE: 300/450x900x18mm



Jindi Feilong Residential Buildings, Changzhou City, China (2011)
Terracotta Panel (Natural Smooth Surface)
ITEM NO.: F431801 F431887 FL431884
F291880 F291888
SIZE: 430x1300x18mm 296x1300x18mm

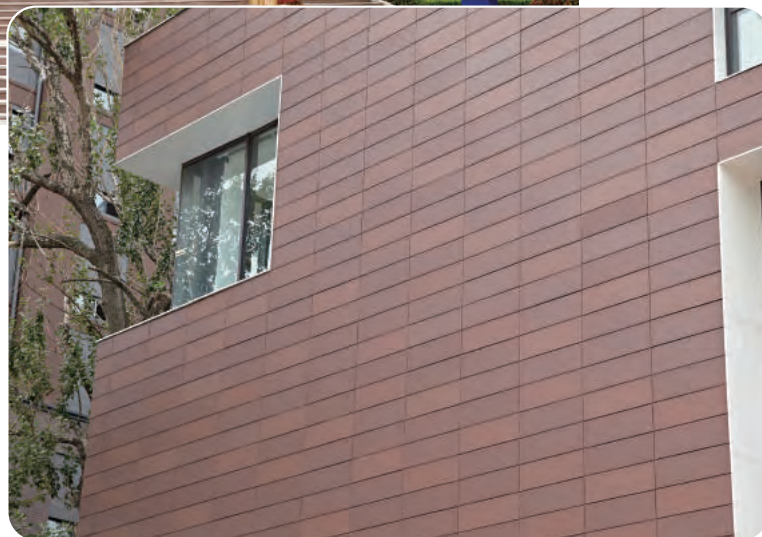
Residential Building



Vanke Meixi Village, Changsha (2014)
Terracotta Panel (Sandblast Surface)
ITEM NO.: FH6020231
SIZE: 600x1200x20mm



Sales Center for Vanke Lanshan Residential
Buildings, Dalian City, China
Terracotta Solid Tile
ITEM NO.: L776 L883 L886
SIZE: 192x600x10mm



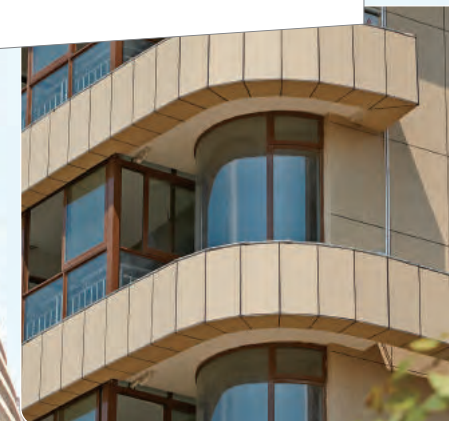
The architectural designers select LOPO's terracotta solid tile (light terracotta panels) as the external wall material for the sales center. The designers select terracotta panels of three colors (brown, light brownish gray, dark brownish gray) that belong to the same category, and randomly collocate those panels to highlight the high-end image of the commercial buildings. To balance the relatively dark colors of this small building, the designers select small-sized terracotta panels (192mm wide x 600mm long) instead of conventional-sized panels to make the entire building become exquisite.

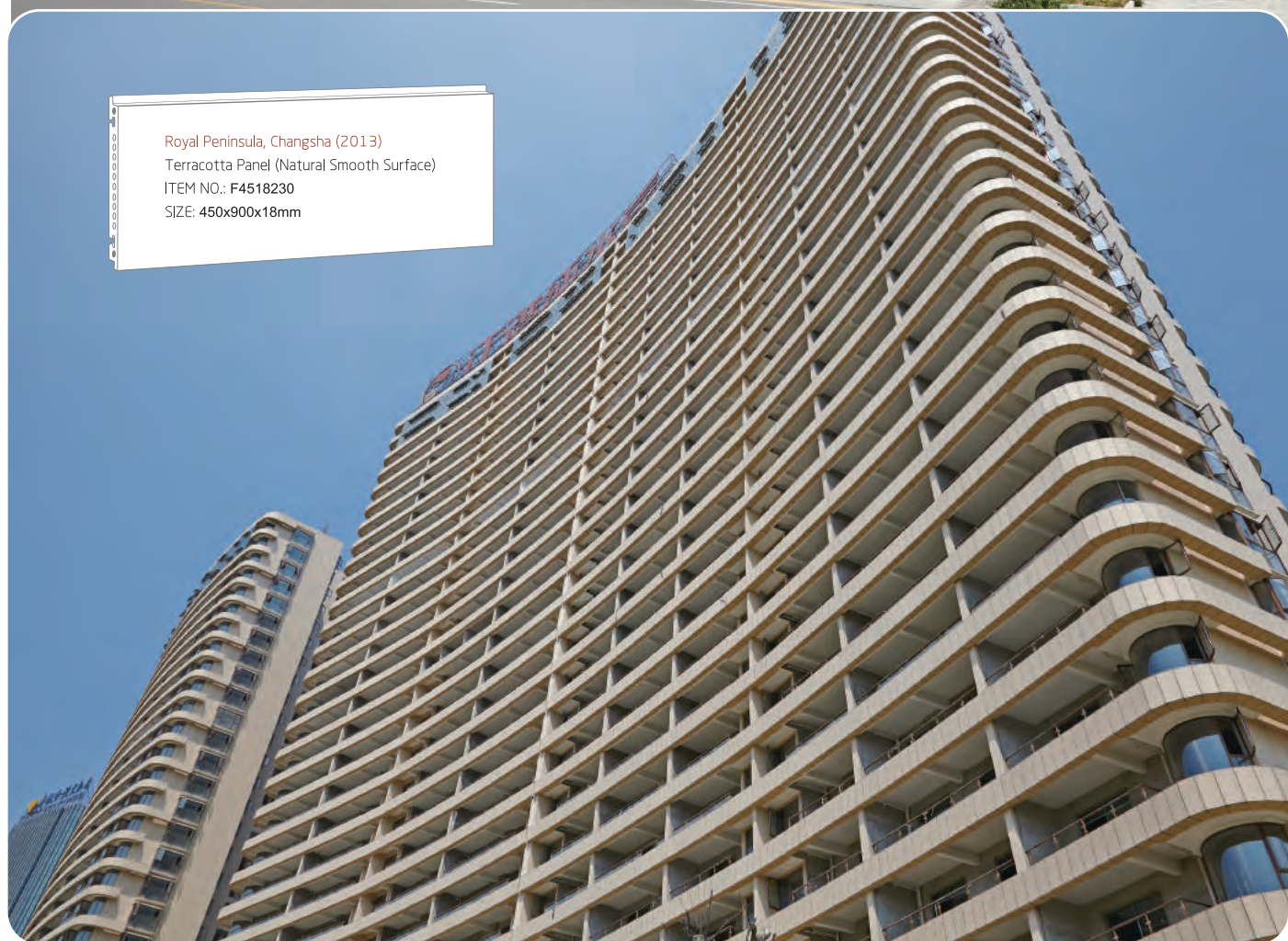


Vanke New Mileage, Beijing (2012)
Terracotta Panel (Natural Smooth Surface)
ITEM NO.: F301870
SIZE: 300x1200x18mm

The architectural designers have chosen milky-white untreated ceramic tiles to add soft tone to the building. As a result, a low-profile and elegant project is achieved by vertically hanging these tiles around the frame of the external walls. When looking from afar, the ceramic curtain wall seems like concise and flowing lines and extends along the wavy facade layer by layer. The buildings are visually extended to an enormous width and depth, and look very spacious and interpenetrating.

Royal Peninsula, Changsha (2013)
Terracotta Panel (Natural Smooth Surface)
ITEM NO.: F4518230
SIZE: 450x900x18mm



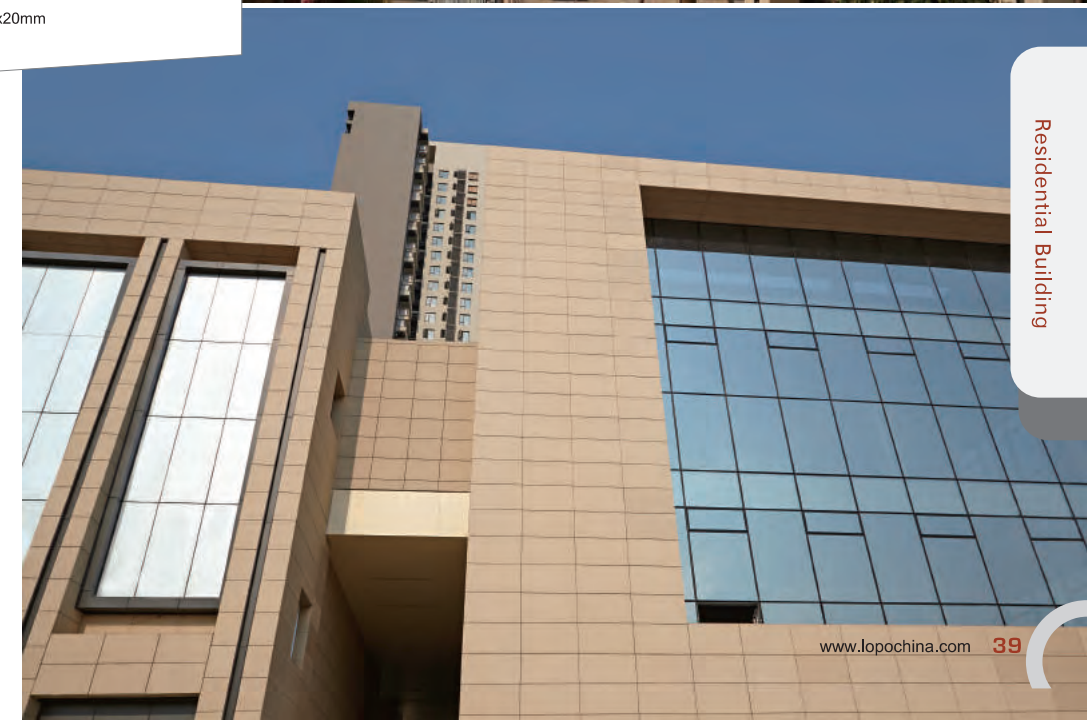


Royal Peninsula, Changsha (2013)
Terracotta Panel (Natural Smooth Surface)
ITEM NO.: F4518230
SIZE: 450x900x18mm

The architectural designers have chosen milky-white untreated ceramic tiles to add soft tone to the building. As a result, a low-profile and elegant project is achieved by vertically hanging these tiles around the frame of the external walls. When looking from afar, the ceramic curtain wall seems like concise and flowing lines and extends along the wavy facade layer by layer. The buildings are visually extended to an enormous width and depth, and look very spacious and interpenetrating.



Vanke Jinyu Huafu, Changsha (2014)
Terracotta Panel (Sandblast Surface)
ITEM NO.: FH6020231
SIZE: 600x900x20mm





Honghui Diequan Bay Villa (2013)
Terracotta Panel (Grooved Surface)
ITEM NO.: FG301876 FG301889 FG501877
SIZE: 300x900x18mm 500x900x18mm

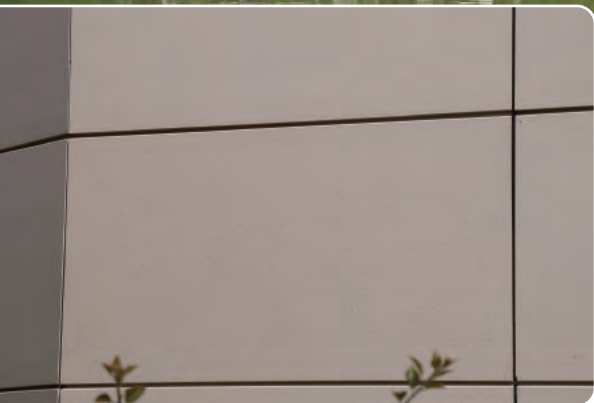
In the exterior walls of this building, the Dutch designer widely applied brown flat-surface terracotta panels and groove-surface terracotta panels, creating an Amsterdam post-modern residential style for this project.

For small architectural projects such as villa, architectural designers previously were likely to prefer traditional exterior wall materials such as clay face brick, marble stone and ceramic tile, as these buildings were small and many were even private projects. However, terracotta panel is very flexible and varied when it comes to design as well as application in exterior walls. As for installation method, mechanical fixing or wet overlaying can be adopted; as for dimension, a variety of conventional dimensions are available, and terracotta panel can be cut as per the projects' needs; as for visual display, terracotta panel with texture and finish (natural flat, wood grainy, grooved, linear, sanding, corrugated surface) naturally formed in the process of extrusion or with colorful glazed surface can be selected. In villa projects, terracotta cladding can be used to create unique styles for small architectural projects.



Fangu Villas in the Jinlin Compound, Guangzhou, China (2013)
Terracotta Panel (Natural Smooth Surface with Glazing Spot)
ITEM NO.: FD3018003 FD3030003
SIZE: 300x600x18mm 300x600x30mm

Without an intriguing design, Fangu villas make full use of the terrain features to be serene. The villas' external walls feature a mixed use of terracotta bricks and panels that are both made of natural clay, creating the harmonious unity with the natural surroundings. Harmonious colors and low profile are created by small pieces of light-brown and dark-brown terracotta bricks that collocate with creamy-white terracotta panels. Those creamy-white terracotta panels are glazed with some light grey-blue dots, making the external walls more simplistic, exquisite and elegant.



LOPO® Terracotta Panels



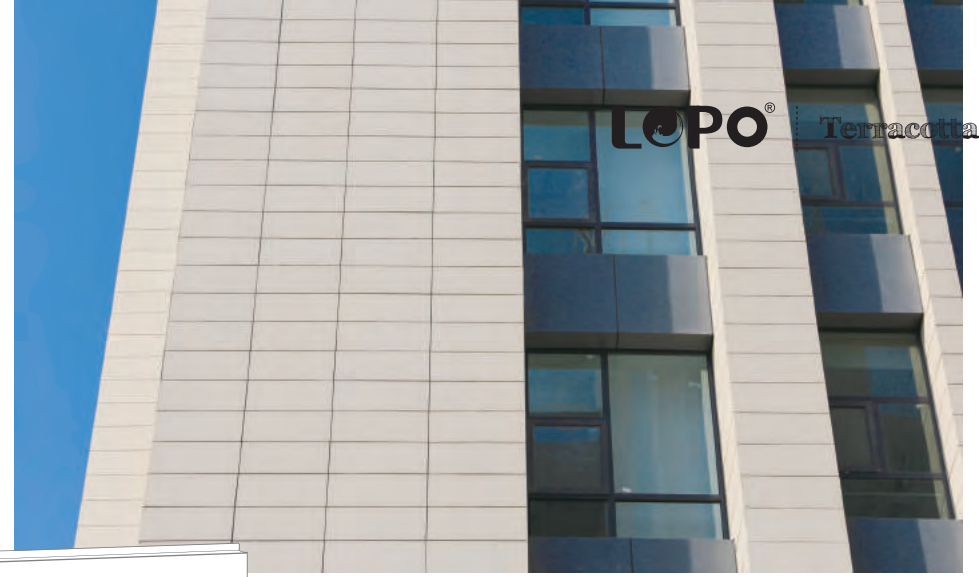
Huairou Base of General Research Institute for Nonferrous Metals, Beijing, China (2015)
Terracotta Panel (Sandblast surface)
ITEM NO.: FH2518872
SIZE: 250x1200x18mm

Government Building



Qingdao Metro Mansion (2015)
Terracotta Panel (Natural Smooth Surface)
ITEM NO.: F4530003 F6030003
SIZE: 600x900X30mm 450x900X30mm

The external walls of this building are covered by open-style terracotta panels, designed with overlapping joints and vertical draining system; LOPO 30mm thick cream-colored terracotta panels vertically surround the building's four corners and the window frames, just like the backbone of the building. With the shadow cast by the sun, the building is grand with a clear outline. With glass curtain walls collocating with terracotta panels, the building caters to simplistic modern taste.



LOPO® Terracotta Panels

Hebei Transportation Emergency Command Center (2012)
 Terracotta Panel (Natural Smooth Surface)
 ITEM NO.: F4018002
 SIZE: 400x900x18mm



Government Building



City Hall Renovation Project, Pingtan City, China (2012)
Terracotta Panel (Natural Smooth Surface)
ITEM NO.: F301801 F301826
SIZE: 300x900x18mm

The designers select terracotta panels of two colors (Champagne-yellow, beige) that belong to the same category. Beige color is used as the basic tune in the most areas of the building's facades, while champagne-yellow color is independently used on the pole and frame portion of the building's facades to outline this building. Such two colors go well along with each other, meeting the solemn and steadfast temperament of a government building.



Qingshan Lake Sci-tech Innovation Center (2015)
Terracotta Panel (Natural Smooth Surface)
ITEM NO.: F4530230
SIZE: 450x900x30mm

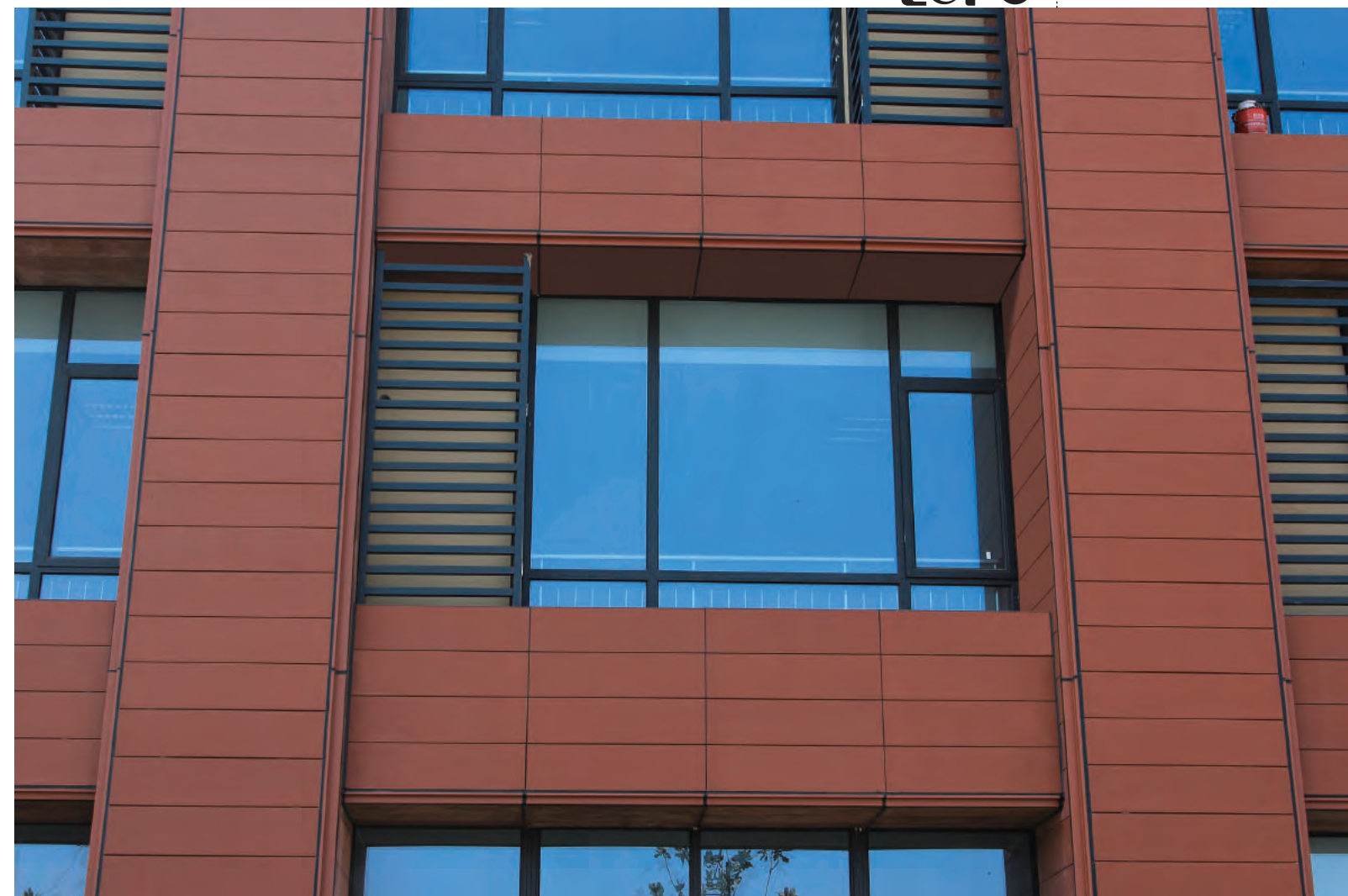


As a national comprehensive non-profit oceanographic institution, this project is conservatively designed with solemnity and calmness specific to a public building for academic research. Its facade features a roof with dark-grey glazed tiles, and light-color external walls, both of which are typically applied to Chinese Suzhou-style buildings. The buildings adopts light-yellow color as their primary color, and their external walls are covered with architectural terracotta that are surrounded by aluminum trim plates.

Annex building's facade is designed with accordion-like poles and walls covered by light-yellow terracotta panels that, together with louvers of the same color in front of the curtain walls, draws a clear and tidy vertical lines, therefore making the building more magnificent.

Qingshan Lake Sci-tech Innovation Center (2015)
Terracotta Panel (Natural Smooth Surface)
ITEM NO.: F4530230
SIZE: 450x900x30mm

Huangpu Medical Center, Shanghai (2015)
Terracotta Facade Panel
(Natural Smooth Surface/Grooved Surface)
ITEM NO.: F302269 FG463369
SIZE: 300x900x22mm 455x900x33mm

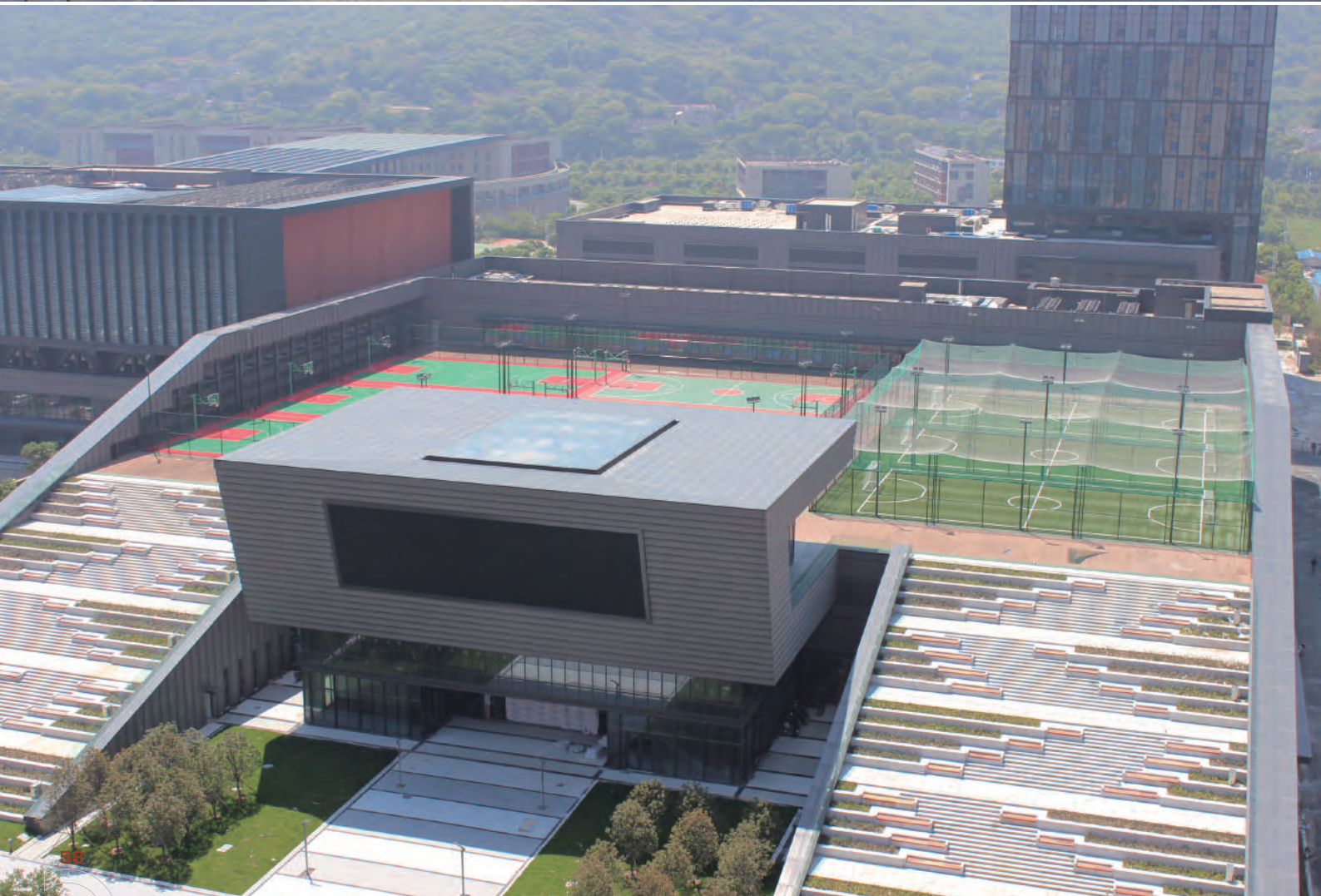


Government Building

General Administration of Quality Supervision,
Inspection and Quarantine of Shaoxin (2015)
Terracotta Facade Panel ((Natural Smooth Surface/Grooved Surface)
ITEM NO.: F303069 FG3030635
SIZE: 300x1200x30mm

The various sizes and textures of the LOPO terracotta products give the structure a profound aura of vitality, doubled by the mixture of light red panels and dark red panels. This linear, stereoscopic design makes the center stand out by offering it not only color and contrast, but also texture and depth. The adding of customized panels in special shapes makes the wall look intriguing. In regard to the terracotta baguettes, the square ones and the louver make an exquisite match with the panels as the exterior walls show the great effects of ventilation and sunshading.

National Fitness Center of Zhoushan (2015)
Product: Terracotta Rainscreen / Terracotta Baguette
ITEM NO.: F4630884 FG4535884 FG4135632 FG4180632/
T50150884 T5050884 TS1063884 TS35663884 T100100884
SIZE: 400x30 530x30 460x30 450x35 410x80 50x50
100x100 50x150 38x106mm

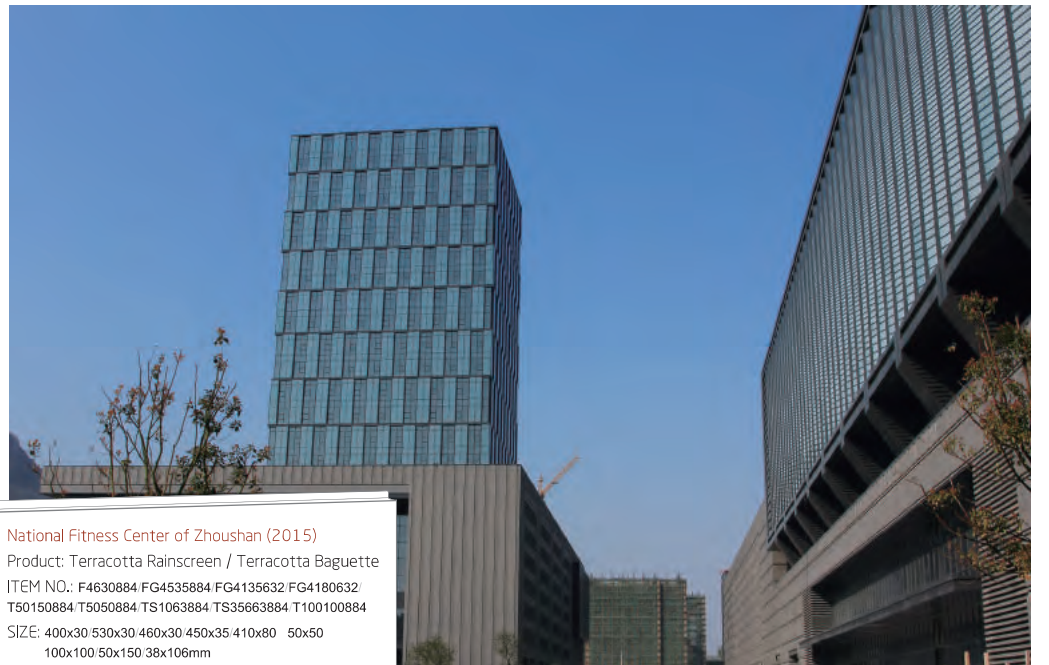


LOPO® Terracotta Panels



Government Building

The various sizes and textures of the LOPO terracotta products give the structure a profound aura of vitality, doubled by the mixture of light red panels and dark red panels. This linear, stereoscopic design makes the center stand out by offering it not only color and contrast, but also texture and depth. The adding of customized panels in special shapes makes the wall look intriguing. In regard to the terracotta baguettes, the square ones and the louver make an exquisite match with the panels as the exterior walls show the great effects of ventilation and sunshading.



National Fitness Center of Zhoushan (2015)
 Product: Terracotta Rainscreen / Terracotta Baguette
 ITEM NO.: F4630884 FG4535884 FG4135632 FG4180632
 T50150884 T5050884 TS1063884 TS35663884 T100100884
 SIZE: 400x30 530x30 460x30 450x35 410x80 50x50
 100x100 50x150 38x106mm



North City Building, Shijiazhuang (2014)
Terracotta Panel (Natural Smooth Surface)
ITEM NO.: F4518881 F4518886 F451826
SIZE: 450x1000x18mm



Daming Building, Hangzhou (2014)
Terracotta Panel (Natural Smooth Surface)
ITEM NO.: F5030238
SIZE: 500x1000x30mm

Fuzhou Pioneer Park (2012)
Terracotta Facade Panel (Natural Smooth Surface)
ITEM NO.: F4518882
SIZE: 450x1000x18mm



Institute of Physics, Chinese Academy of Sciences (2013)
Terracotta Facade Panel (Natural Smooth Surface)
ITEM NO.: F3018886
SIZE: 300x900x18mm



Memorial Hall for Japanese aggression, Korea (2013)
Terracotta Panel (Sandblast surface)
ITEM NO.: FH3024884
SIZE: 300x1196x24mm



LOPO® Terracotta Panels



Shingo Institute, Korea (2013)
Terracotta Panel/Terracotta Square Baguette
ITEM NO.: T505064 F301864
SIZE: 50x50x1215mm 300x1215x18mm

LOPO Terracotta Solid Tile Project

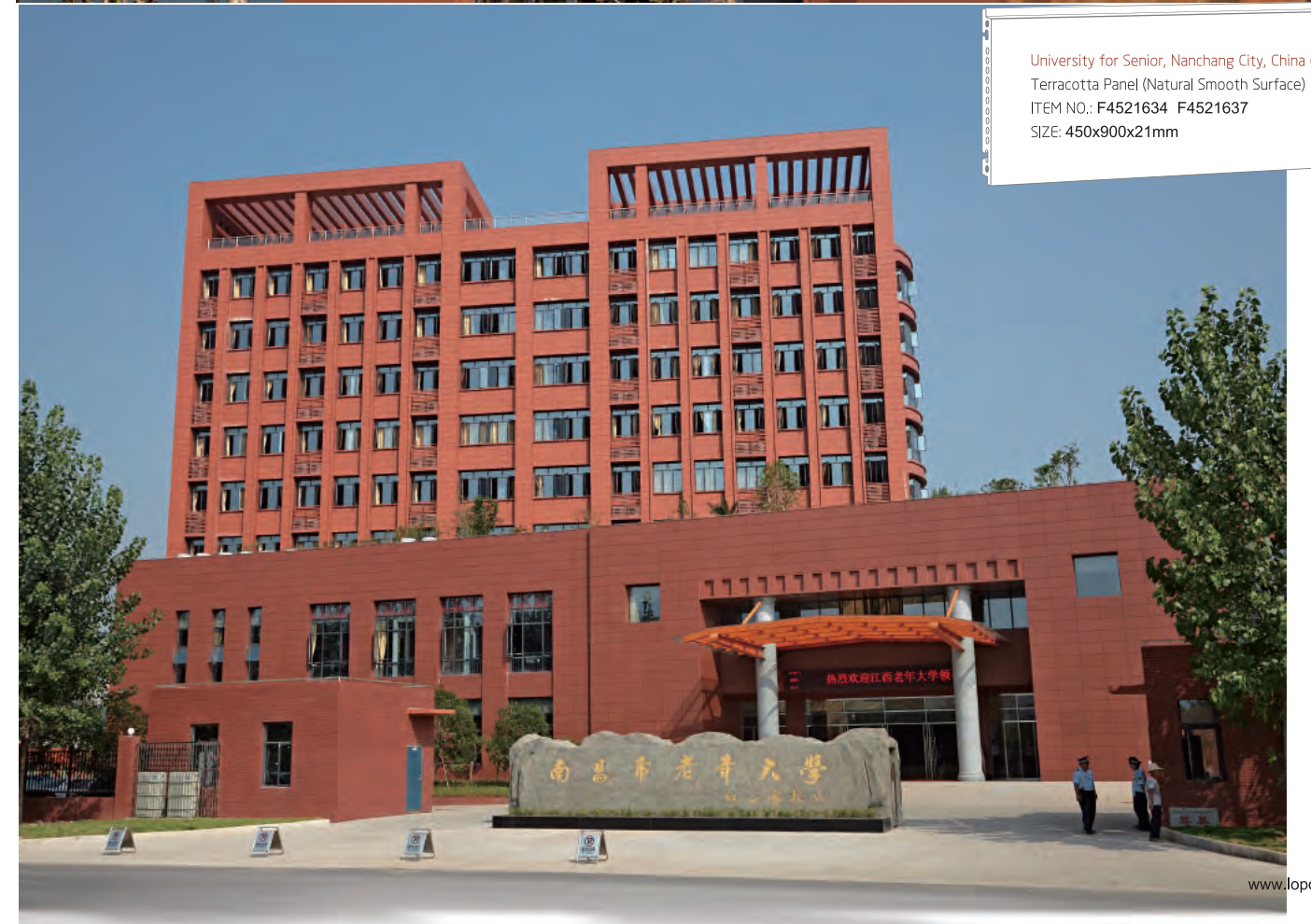


Indoor Swimming Center, Xiang'an Campus of Xiamen University (2013)
Terracotta Solid Tile
ITEM NO.: FR632
SIZE: 120x300x12mm

LOPO Terracotta Solid Tile Project



Hangzhou Tide Building (2013)
Terracotta Solid Tile
ITEM NO.: LX770
SIZE: 115x600x15mm

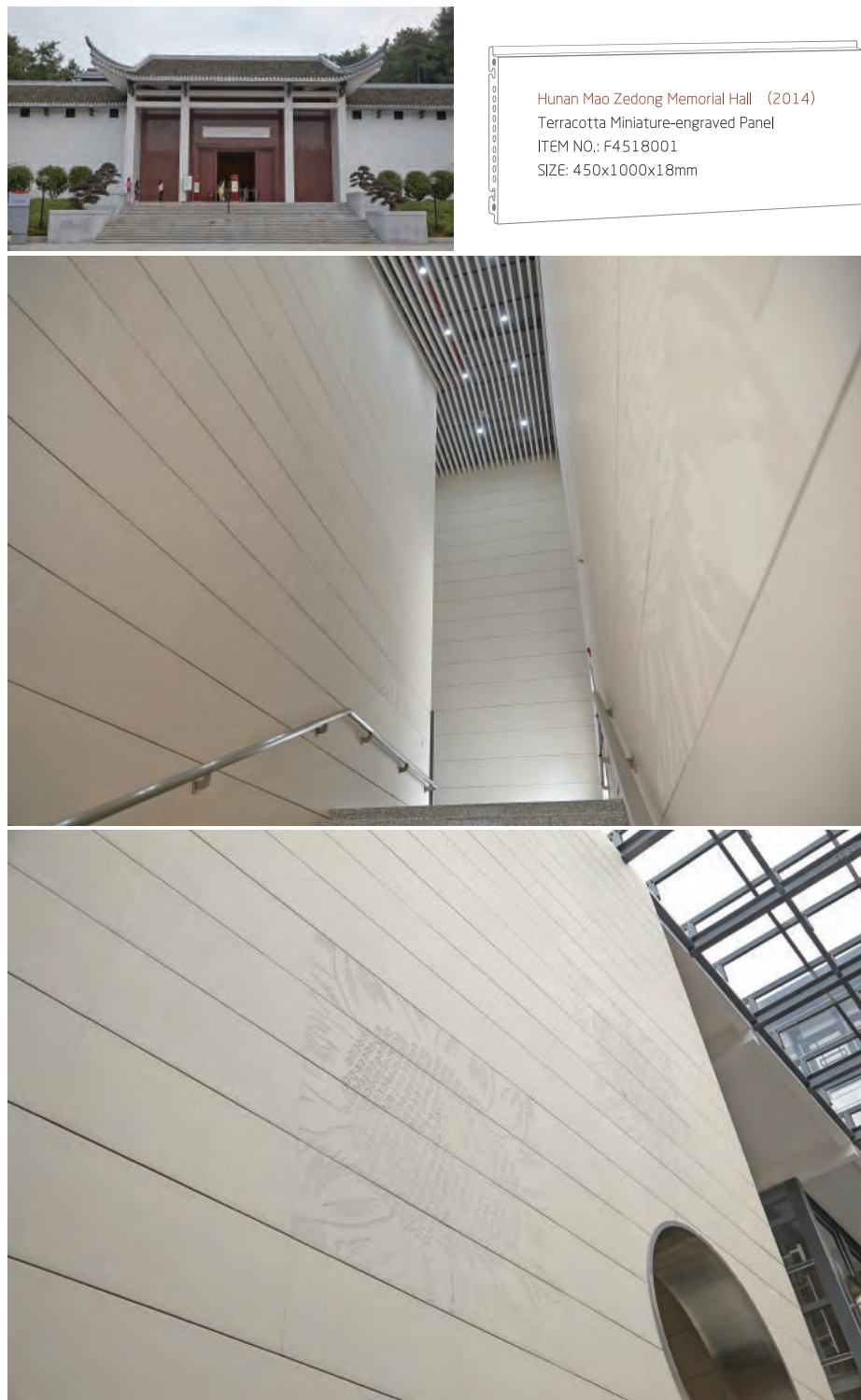


University for Senior, Nanchang City, China (2014)
Terracotta Panel (Natural Smooth Surface)
ITEM NO.: F4521634 F4521637
SIZE: 450x900x21mm

LOPO MINIATURE-ENGRAVED PANEL

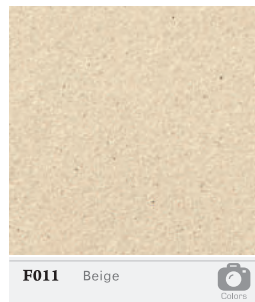
The walls of the Memorial Hall are made of LOPO beige terracotta panels, and the color and lustre of the plates are gentle, simple and elegant, ideal for a place like the Memorial Hall that requires tranquil and peaceful atmosphere.

One of the highlights of the interior decoration is the micro-carving on the terracotta panels. A sunflower pattern is micro-carved into eight terracotta panels, with different depths in the terracotta panel surface. The natural difference in the color and lustre between the original surface and the carved surface of the terracotta panels makes the entire pattern show a three-dimensional effect with sketch-like outline, being harmonious with the style of the entire Memorial Hall while also adding vivid touch to the originally insipid walls.

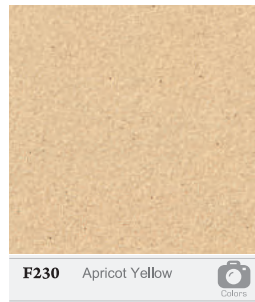


Colors

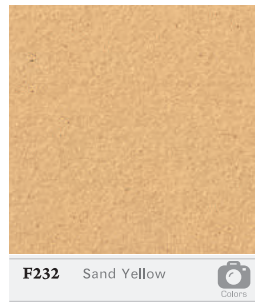
Lopo Terracotta Facade Panels



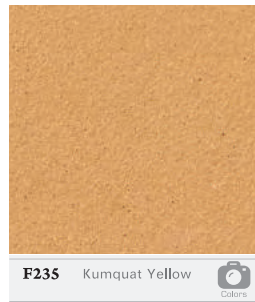
F011 Beige



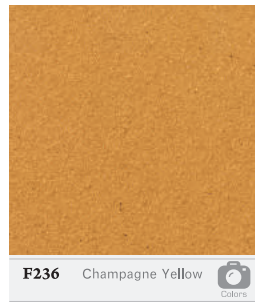
F230 Apricot Yellow



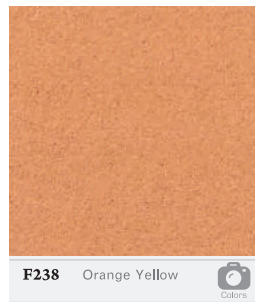
F232 Sand Yellow



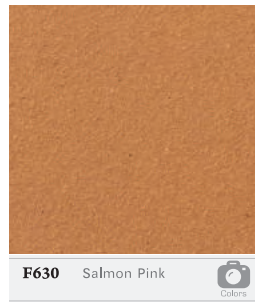
F235 Kumquat Yellow



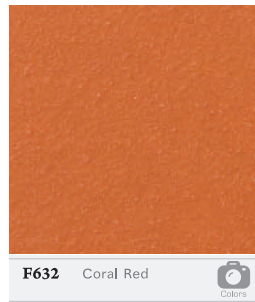
F236 Champagne Yellow



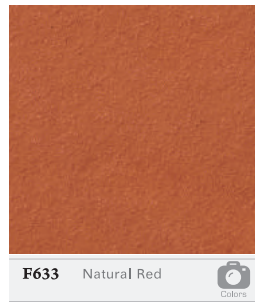
F238 Orange Yellow



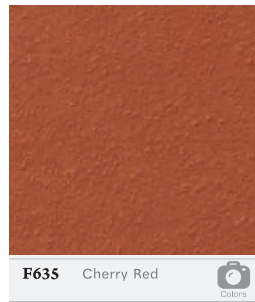
F630 Salmon Pink



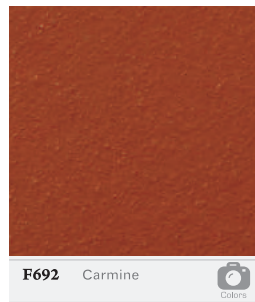
F632 Coral Red



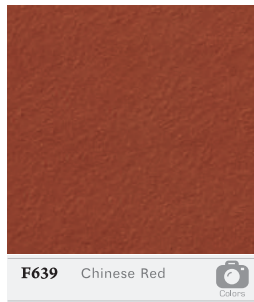
F633 Natural Red



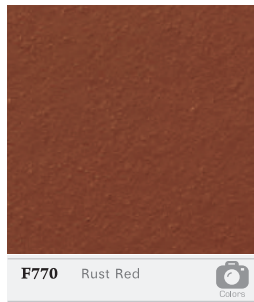
F635 Cherry Red



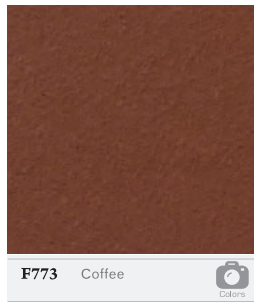
F692 Carmine



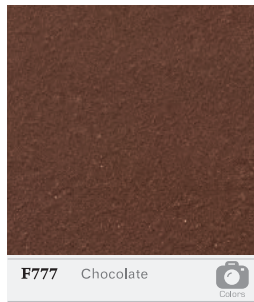
F639 Chinese Red



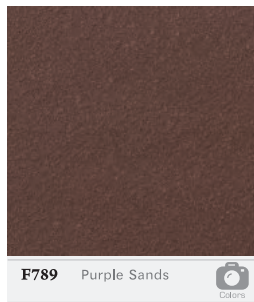
F770 Rust Red



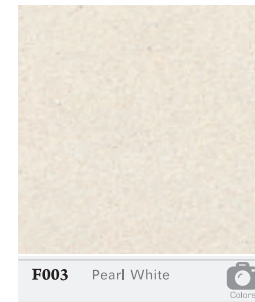
F773 Coffee



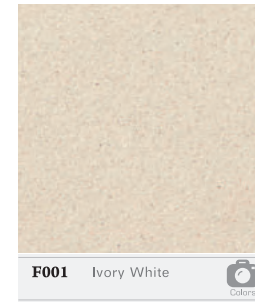
F777 Chocolate



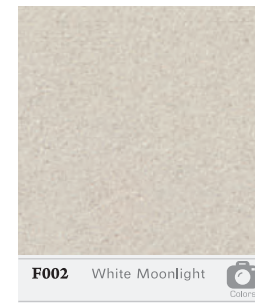
F789 Purple Sands



F003 Pearl White



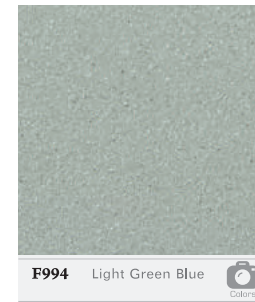
F001 Ivory White



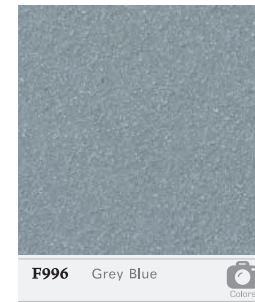
F002 White Moonlight



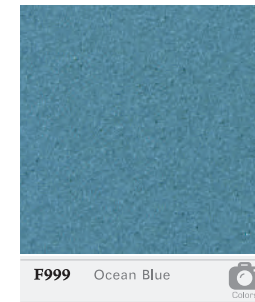
F880 Gray White



F994 Light Green Blue



F996 Grey Blue



F999 Ocean Blue



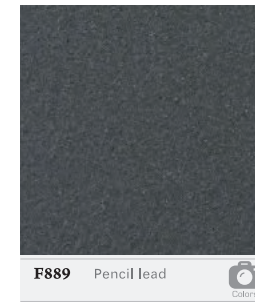
F883 Silver Gray



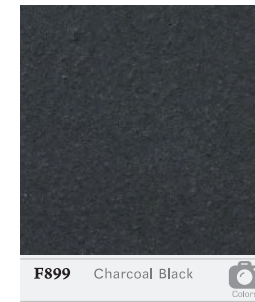
F884 Light Gray



F886 Great wall Grey



F889 Pencil lead



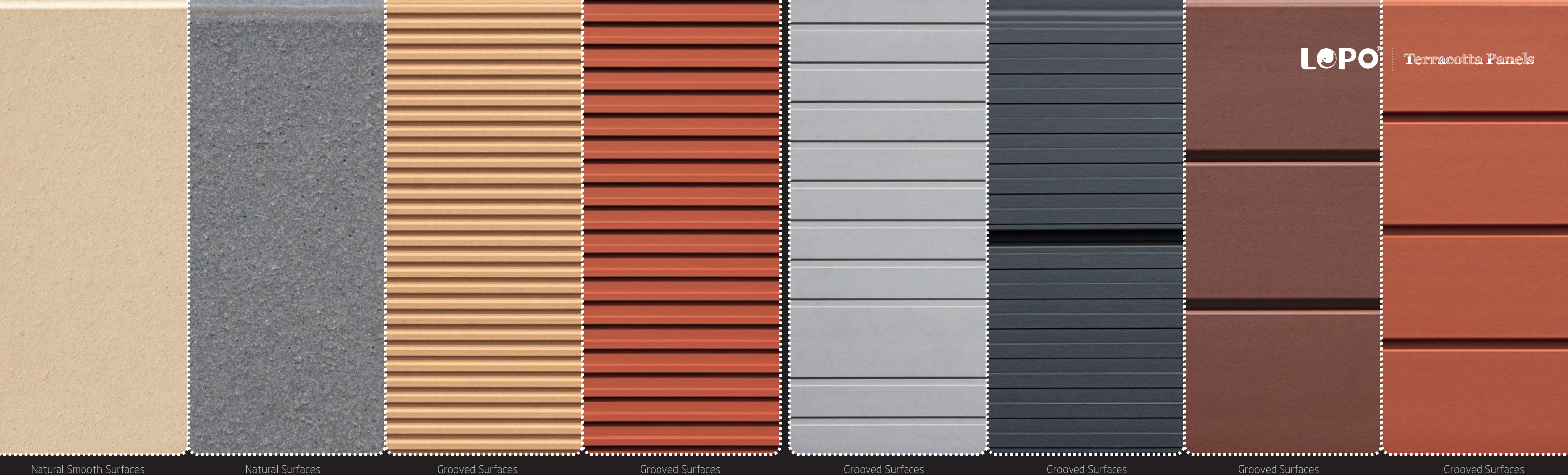
F899 Charcoal Black

Colors

Lopo Terracotta Facade Panels

LOPO terracotta product is formed by natural clay extrusion and fired under high temperature. Clay features with natural chemical elements, mineral composition and process characterization. Colors of terracotta are formed by specific chemical elements contained in clay entering into chemical reaction due to high temperatures. Different colors of terracotta can be achieved by adjusting the ratio of chemical elements (by changing the mixing ratio of clay material of different colors) and by adjusting temperatures. Except a few special colors (such as bright colors), LOPO terracotta facade have natural and warm colors that can last for century, without adding any color additives. The colors shown represent a small sample from our extensive range of standard and custom possibilities.





Natural Smooth Surfaces

Natural Surfaces

Grooved Surfaces

Grooved Surfaces

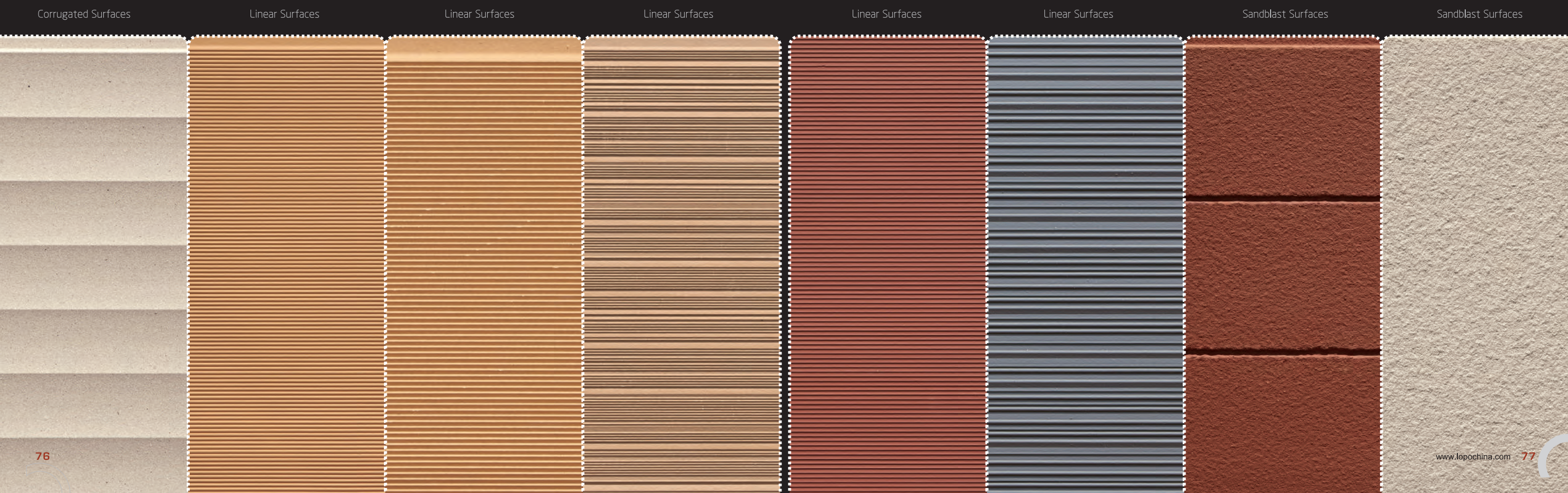
Grooved Surfaces

Grooved Surfaces

Grooved Surfaces

Grooved Surfaces

FINISHES AND SURFACE STRUCTURES



Corrugated Surfaces

Linear Surfaces

Linear Surfaces

Linear Surfaces

Linear Surfaces

Linear Surfaces

Sandblast Surfaces

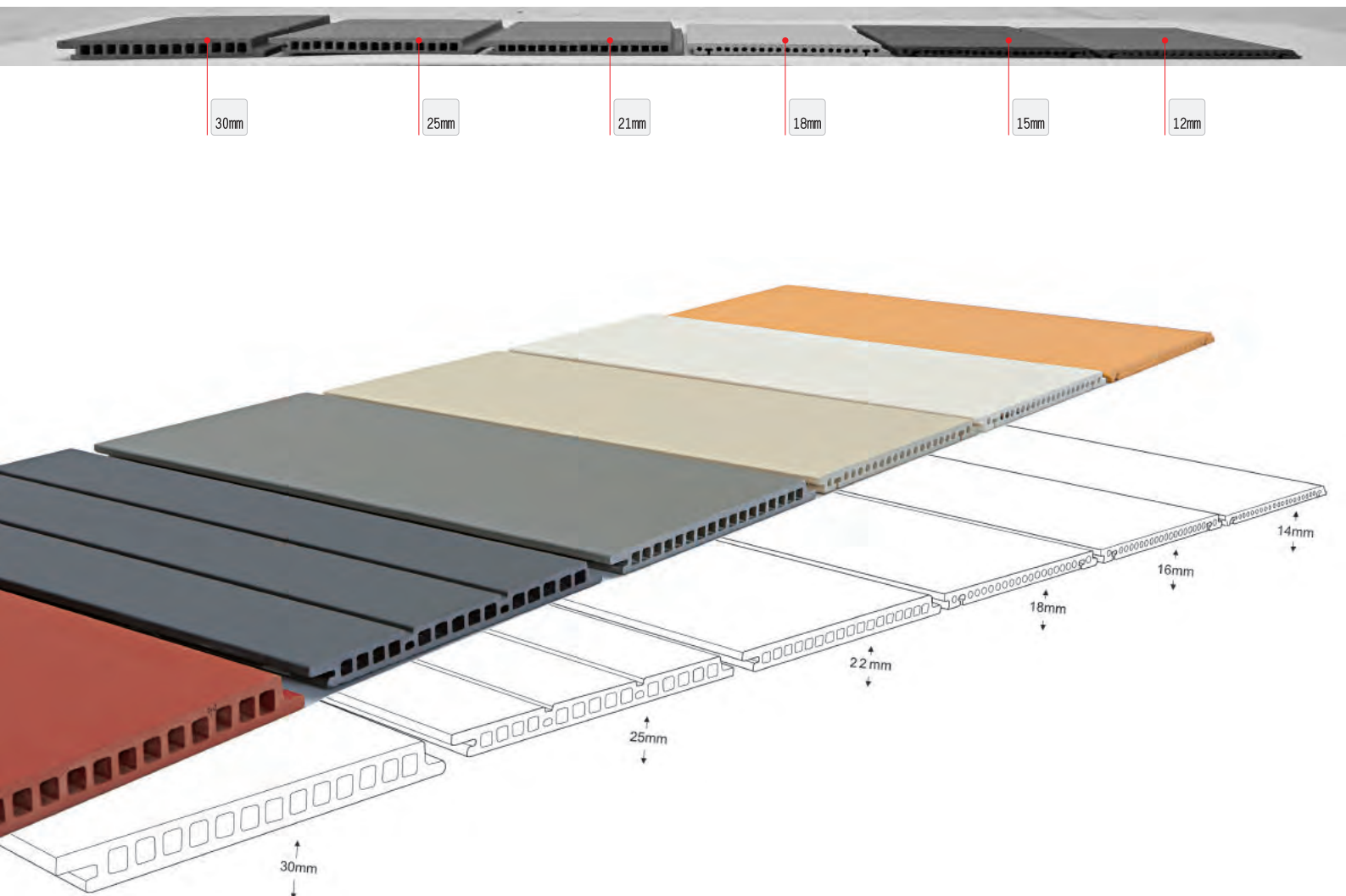
Sandblast Surfaces

DIMENSIONS OF LOPO TERRACOTTA FACADE PANELS

In designing an elevation of a building, the designers often have to choose terracotta tiles of different dimensions based on the structures and appearance of the elevation. In addition to wide options of standard panels, LOPO also can meet the complex requirement of large or special projects concerning the different dimensions of terracotta panels, by producing customized tiles according to the design needs and by cutting the tiles into desired dimensions at our plant.

Standard Thickness

Thickness: 12mm 15mm 18mm 21mm 25mm 30mm

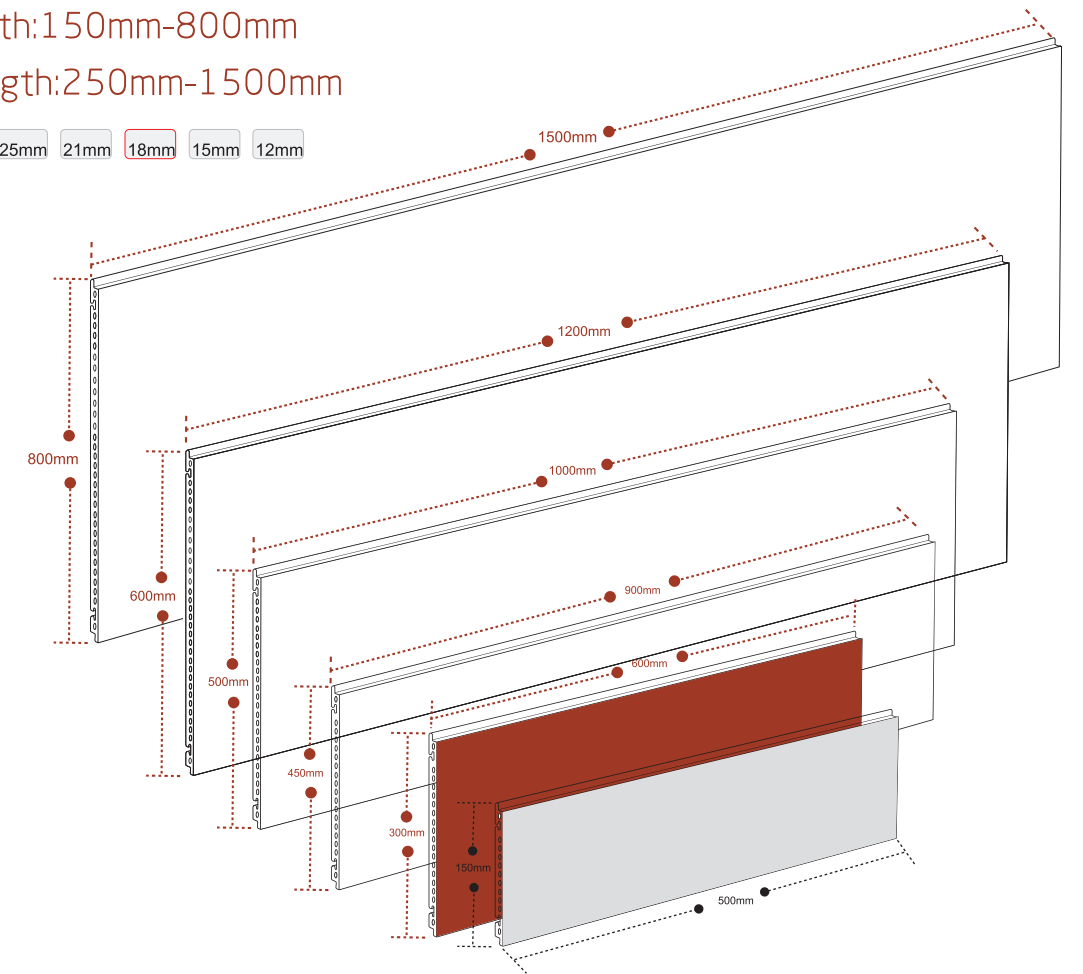


Standard Width and Length

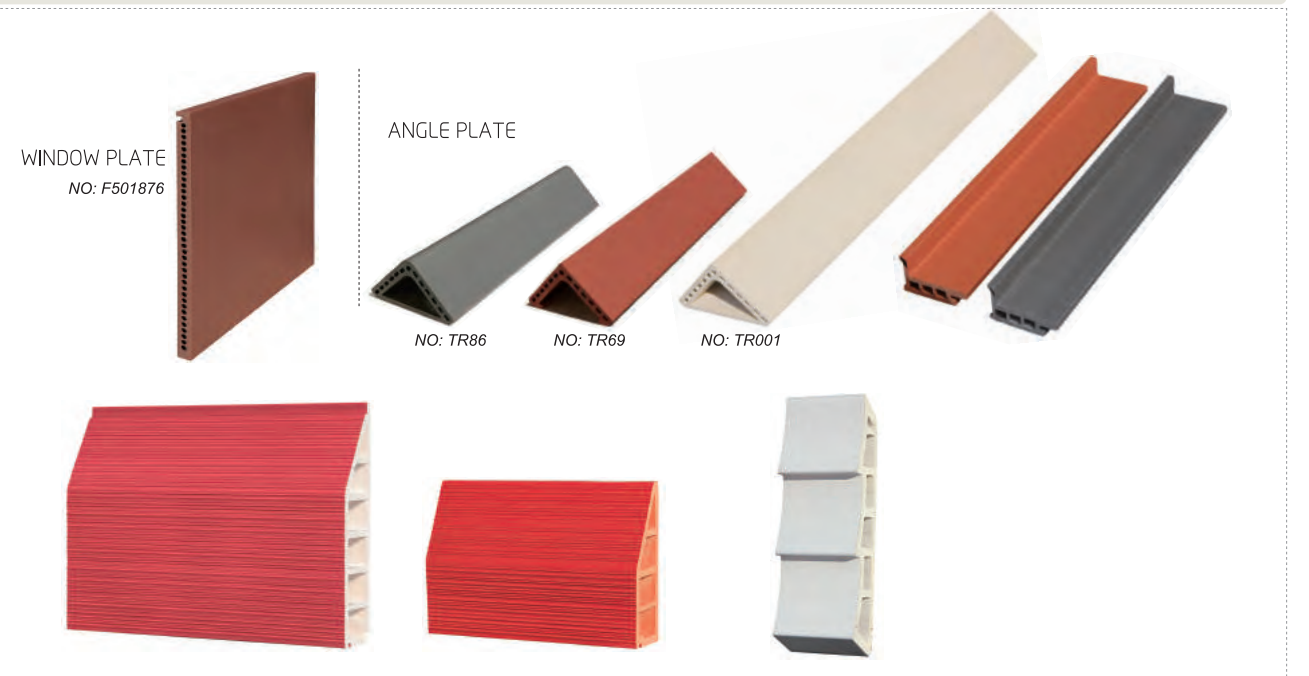
Standard Width: 150mm-800mm

Standard Length: 250mm-1500mm

Thickness: 30mm 25mm 21mm 18mm 15mm 12mm



Special Shapes



TERRACOTTA FACADE PANEL

Natural Flat Series

Natural smooth surface is most classic finish which could bring out the material's fine granularity. Different fineness can be achieved to represent different visual effect according to design requirement.



NO: F601801
NATURAL SMOOTH SURFACES



NO: F451826
NATURAL SMOOTH SURFACES



NO: F502226
NATURAL SMOOTH SURFACES



NO: F451884
NATURAL SMOOTH SURFACES



NO: F152461
NATURAL SMOOTH SURFACES



NO: F301663
NATURAL SMOOTH SURFACES



NO: F4521634
NATURAL SMOOTH SURFACES



NO: F402286
NATURAL SMOOTH SURFACES



NO: F3018003
NATURAL SMOOTH SURFACES



NO: F3018990
NATURAL SMOOTH SURFACES



NO: F301801
NATURAL SMOOTH SURFACES



NO: F3018231
NATURAL SMOOTH SURFACES



NO: F303065
NATURAL SMOOTH SURFACES



NO: F4030002
NATURAL SMOOTH SURFACES



NO: F 3018882
NATURAL SMOOTH SURFACES



NO: F4030889
NATURAL SMOOTH SURFACES



NO: F3016886
NATURAL SMOOTH SURFACES



NO: F302285
NATURAL SMOOTH SURFACES

TERRACOTTA FACADE PANEL

Natural Flat Series

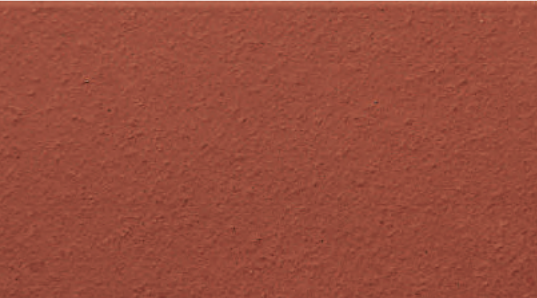
Natural smooth surface is most classic finish which could bring out the material's fine granularity. Different fineness can be achieved to represent different visual effect according to design requirement.



NO: F238
NATURAL SMOOTH SURFACES



NO: F634
NATURAL SMOOTH SURFACES



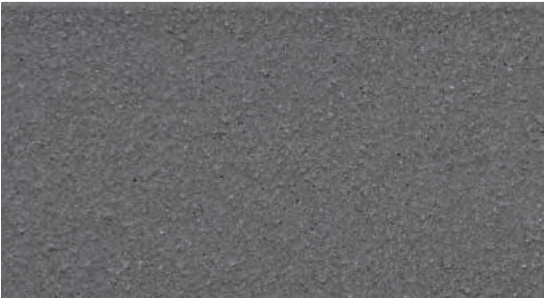
NO: F639
NATURAL SMOOTH SURFACES



NO: F562
NATURAL SMOOTH SURFACES



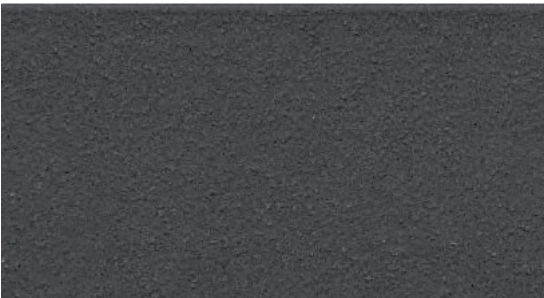
NO: F883
NATURAL SMOOTH SURFACES



NO: F886
NATURAL SMOOTH SURFACES



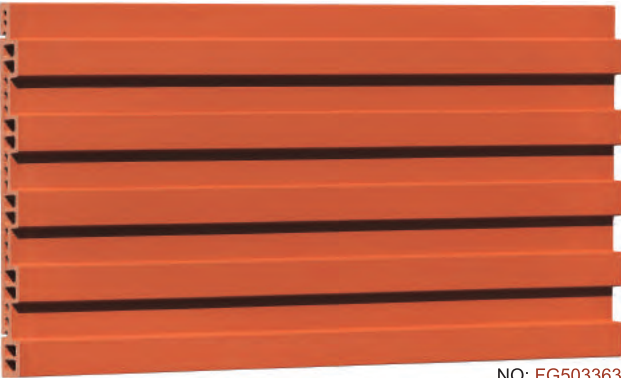
NO: F858
NATURAL SMOOTH SURFACES



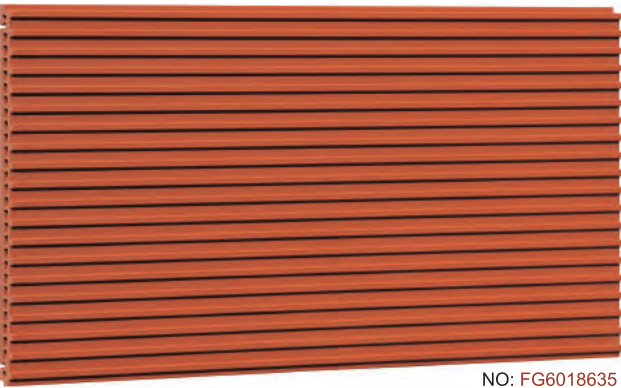
NO: F889
NATURAL SMOOTH SURFACES

TERRACOTTA FACADE PANEL

Special Cladding Panel Grooved Series/Linear Series/Corrugated Series /Curved Series/Special Element



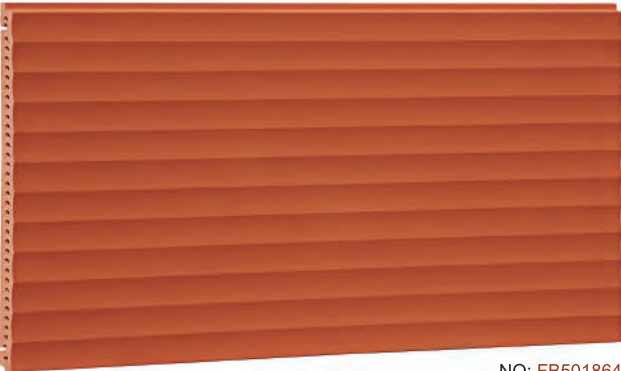
NO: FG503363
GROOVED SURFACES



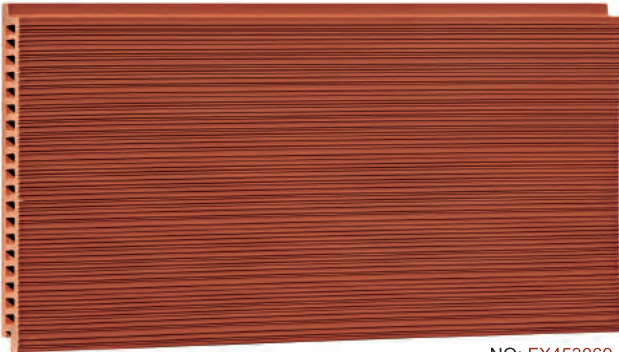
NO: FG6018635
GROOVED SURFACES



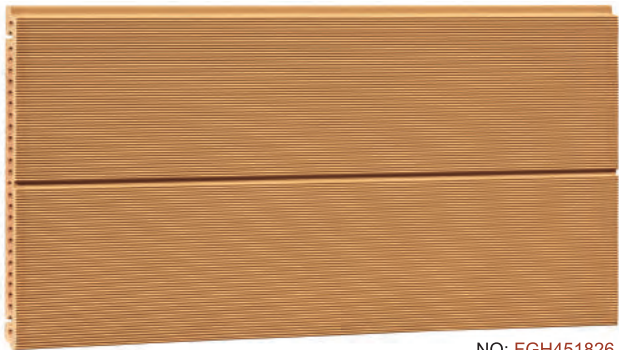
NO: FG4518636
GROOVED SURFACES



NO: FB501864
CORRUGATED SURFACES



NO: FX453069
LINEAR SURFACES



NO: FGH451826
LINEAR SURFACES



NO: FG6025880
GROOVED SURFACES

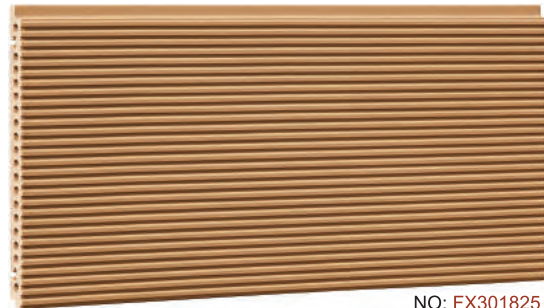


NO: FG6018882
GROOVED SURFACES

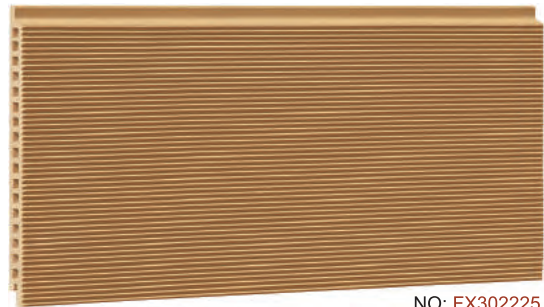
TERRACOTTA FACADE PANEL

Special Cladding Panel Grooved Series/
Linear Series/Corrugated Series/ Special Element

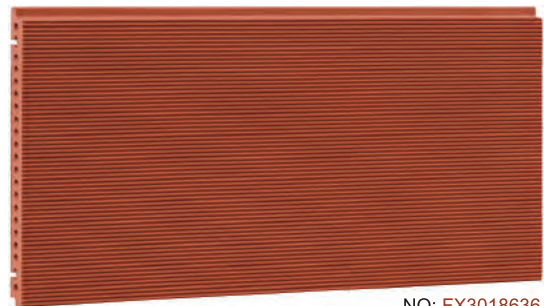
LOPO standard terracotta facade panel products have wide options of surface structures and special shapes, including various profiles and special elements for corner, soffit, pillar, along with many cross-sections. For particular projects with special requirement, our ranges can be extended to provide the individual element on request.



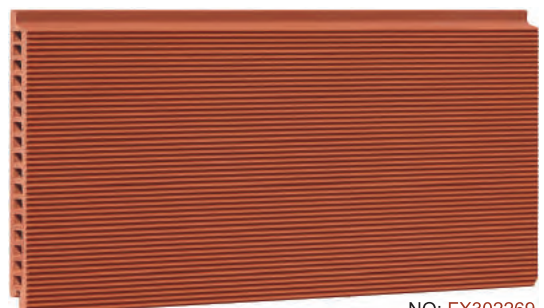
NO: FX301825
Linear Surfaces



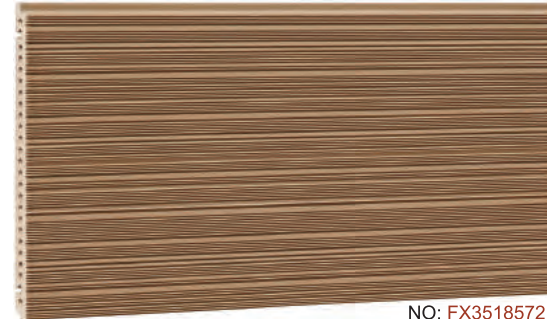
NO: FX302225
Linear Surfaces



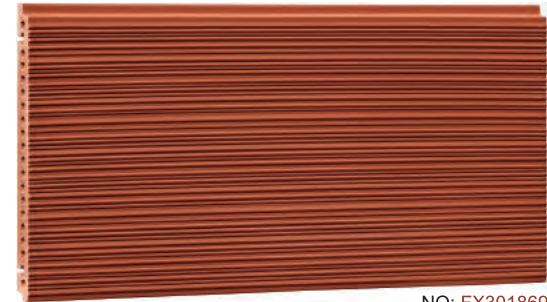
NO: FX3018636
Linear Surfaces



NO: FX302269
Linear Surfaces



NO: FX3518572
Linear Surfaces



NO: FX301869
Linear Surfaces



NO: FX3018994
Linear Surfaces



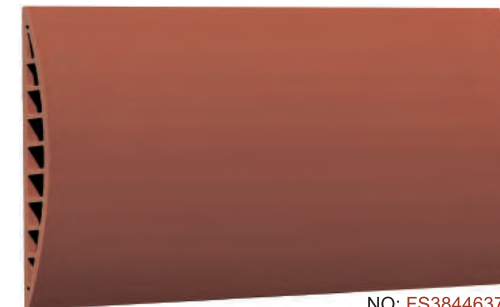
NO: FB3020018
Corrugated Surfaces



NO: FB3020886
Corrugated Surfaces



NO: FS5135637
Special Element



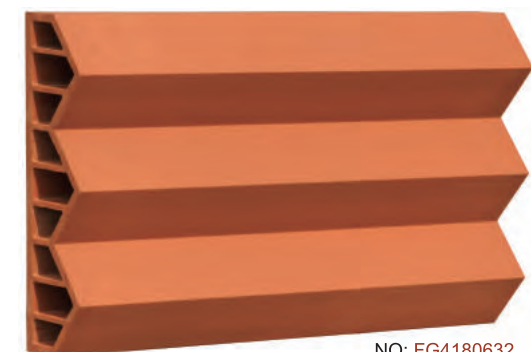
NO: FS3844637
Special Element



NO: FT30100768
Special Element



NO: F30(34+16)63
Special Element



NO: FG4180632
Corrugated Surfaces



NO: FG352269
Grooved Surfaces



NO: FG3018638
Grooved Surfaces



NO: FG301876
Grooved Surfaces



NO: FG303086
Grooved Surfaces



NO: FG3018889
Grooved Surfaces



NO: FH3018001
SANDING SURFACES



NO: FH3018230
SANDING SURFACES



NO: FH3024884
SANDING SURFACES



NO: FH203062
SANDING SURFACES



NO: FH303062
SANDING SURFACES

TERRACOTTA FACADE PANEL

Sandblast Series

LOPO terracotta panel of sanding finish makes the cladding of the building more sophisticated. Unique visual effects of the sandblast surface due to diffuse reflection can be created under the sunlight, which greatly enrich the expressiveness of the building. In order to present a "natural stone" appearance, a special surface processing is done on the panel of natural smooth surface.



NO: FHG5018640
SANDING SURFACES

TERRACOTTA FACADE PANEL

Wood Grain Series

LOPO wood-grain surface panel offer realistic reproduction of timber appearance, achieving the wood's graded colors and irregular grain effect, rather than uniform and rigid colors and patterns. More unique patterns and unlimited colors can be produced according to designers and architects.



NO: FW3018217
WOOD GRAIN SURFACES



NO: FW3016217
WOOD GRAIN SURFACES



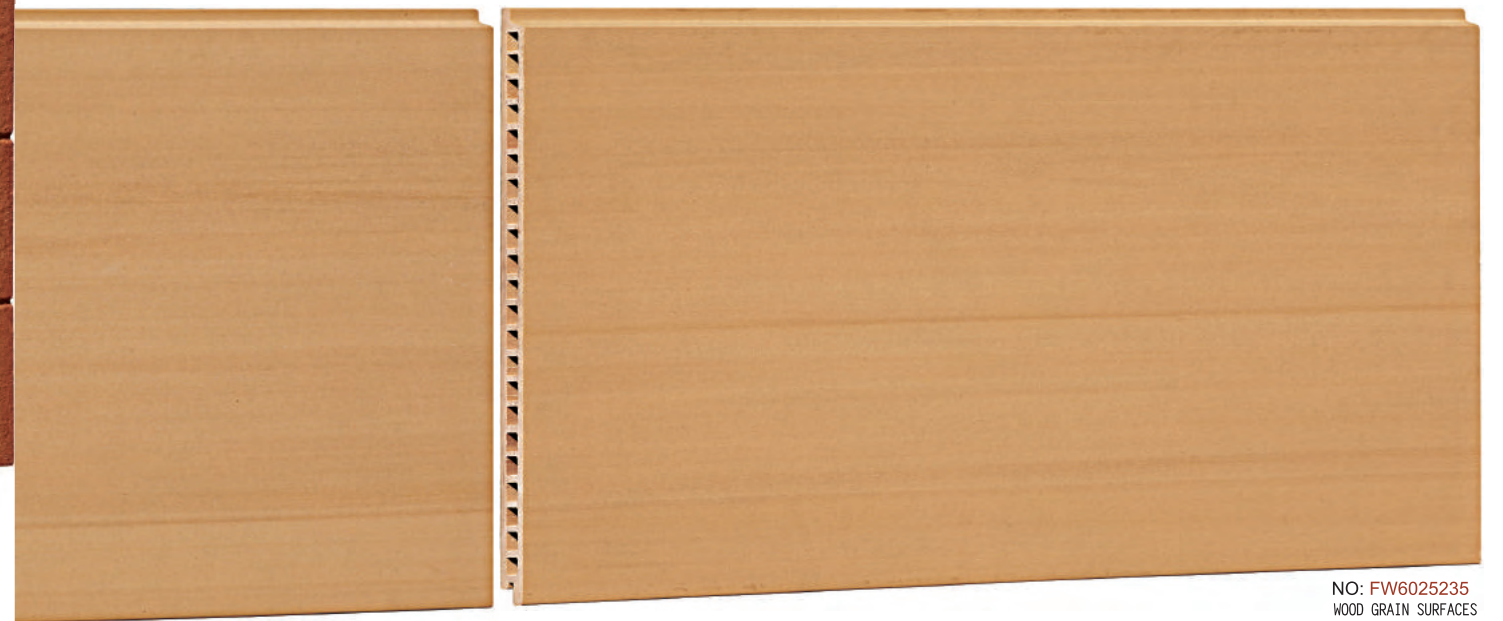
NO: FW3018617
WOOD GRAIN SURFACES



NO: FW3016617
WOOD GRAIN SURFACES



NO: FW3018218
WOOD GRAIN SURFACES



NO: FW6025235
WOOD GRAIN SURFACES

LIGHT TERRACOTTA PANEL

LOPO Solid Ceramic Elements

Different from LOPO's Terracotta Facade Panel with hollow chamber cross-section, LOPO's Solid Ceramic Tile (also known as Light Ceramic Plate) is solid and light, with its thickness less than 15mm. This kind of tile is less weight-burden on the wall structure and can be flexibly cut to the desired length and width, and into special shapes as required by the architectural design. It is easy and flexible to install, either by using wet cement paste or mechanical fixing system. It is ideally used as decoration for low rise building's external walls or interior walls.

Standard Thickness: 10 mm, 11 mm, 12 mm, 13 mm, 15 mm
Surface Options: Smooth, Sandblasted, Textured, Glazed



No. LW1010217
SIZE:100X300X10MM



No. LW1010617
SIZE:100X300X10MM



NO: LW1510616



NO: LW1510716



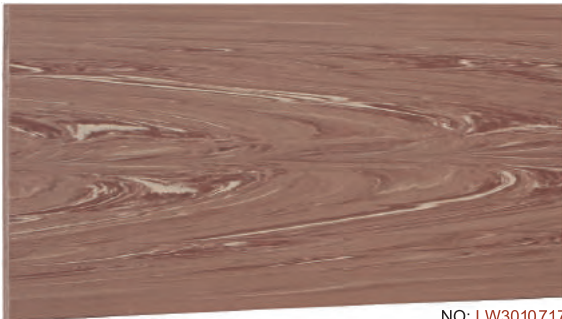
NO: LW3010217
WOOD GRAIN SURFACES



NO: LW3010617
WOOD GRAIN SURFACES



NO: LW3010618
WOOD GRAIN SURFACES



NO: LW3010717
WOOD GRAIN SURFACES



NO: L301001
NATURAL SMOOTH SURFACES



NO: L4311003
NATURAL SMOOTH SURFACES



NO: L301589
NATURAL SMOOTH SURFACES



NO: LH301001
SANDING SURFACES



NO: L3012779
NATURAL SMOOTH SURFACES



NO: LH3010889
SANDING SURFACES



NO: L3012632
NATURAL SMOOTH SURFACES



NO: LH3010579
SANDING SURFACES

LIGHT TERRACOTTA PANEL

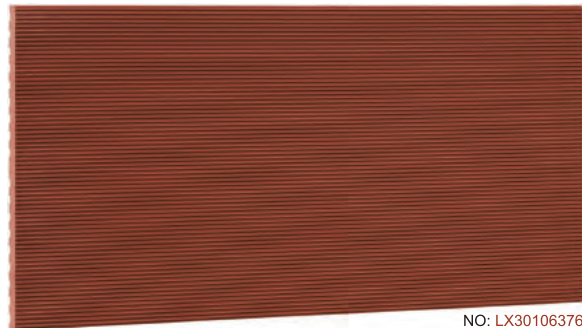
LOPO Solid Ceramic Elements



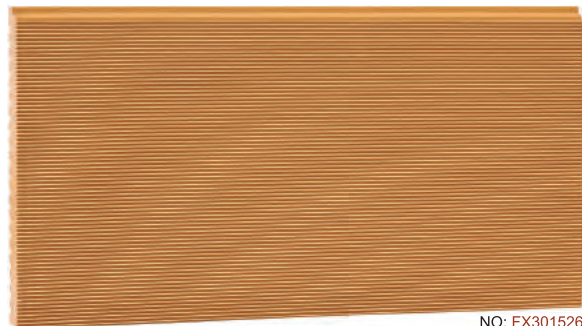
NO: LX770
LINEAR SURFACES



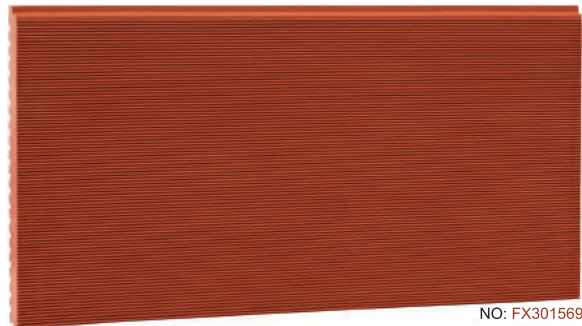
NO: LX3010899
LINEAR SURFACES



NO: LX30106376
LINEAR SURFACES

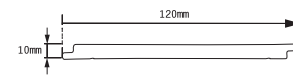


NO: FX301526
LINEAR SURFACES



NO: FX301569
LINEAR SURFACES

Small Terracotta Panels



NO: FR231



NO: FR231
SIZE: 120X300X10MM



NO: FR632
SIZE: 120X300X10MM



NO: FR772
SIZE: 120X300X10MM

LOPO MINIATURE-ENGRAVED PANEL

LOPO terracotta panels with miniature-engraved surface borrows the idea from miniature-engraving treatment of the marble surfaces. Miniature-engraving is commonly known and widely used in the treatment of marble grains in the marble-production regions of Fujian Province. When applying miniature-engraving to terracotta panels, customized patterns can be attained, and different color mixture is available through dyeing and inlay technique. Miniature-engraved products can not only be used for room decoration, but also can constitute an entire creative project.



LOPO TERRACOTTA STAIR TREADS AND RISERS

Different thicknesses, textured surface and colors are available on request.

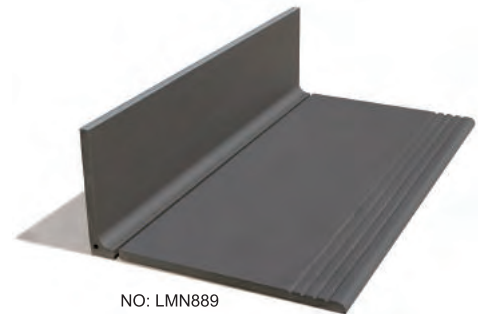
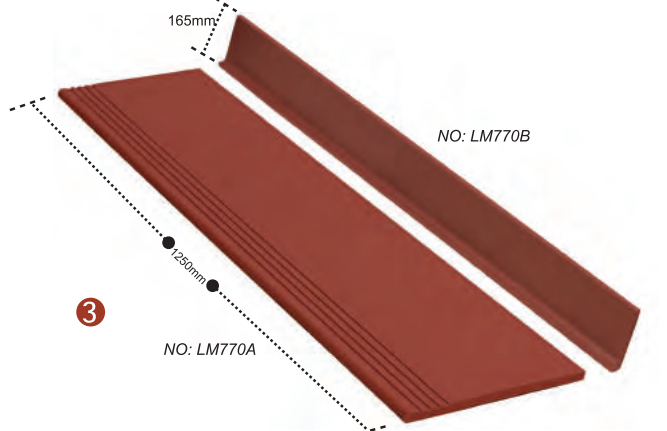
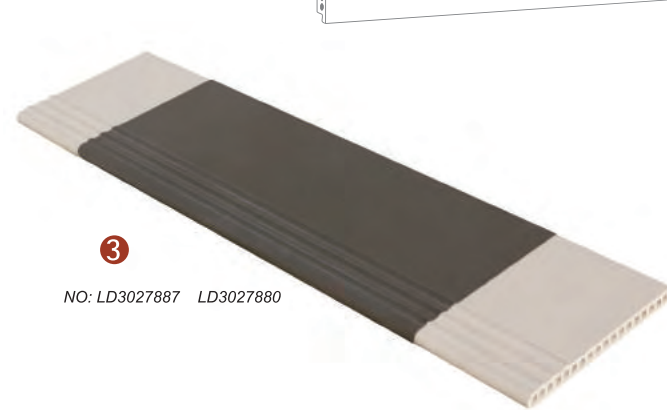


LOPO TERRACOTTA STAIR TREADS AND RISERS

LOPO stair products follow modern architectural aesthetic trends and meet functional needs. The series features the "one-step moulding" process, and has transformed traditional small-sized stair tread to one-step molded large stair panel, with an anti-slip slot being formed at the same time during the production. Compared to traditional treads, stair panel is more convenient to be used in constructions, and looks more integrated and magnificent.



Xianyao Bay NO.1 Building, Dalian (2013)
ITEM NO.: F6025880 F6025003
LD3027880 LD3027887 F6025003
SIZE: 600x1200x25mm 300x900x27mm



LOPO TERRACOTTA GLAZING PANEL



NO: FY3024003
SIZE:300X600X24MM



NO: FY3018250
SIZE:300X600X18MM



NO: FY3024240
SIZE:300X600X24MM



NO: FGY3018235
SIZE: 300x600x18mm



NO: FY3018660
SIZE: 300x600x18mm



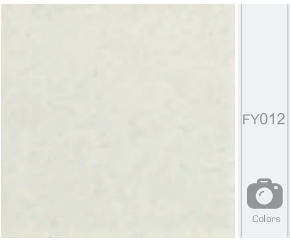
NO: FY3018639
SIZE:300X600X18MM



NO: FY3018901
SIZE:300X600X18MM



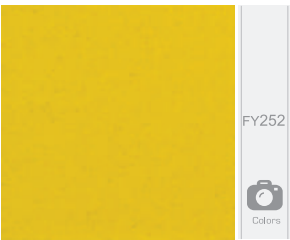
NO: FY6030582
SIZE:600X900X30MM



FY012



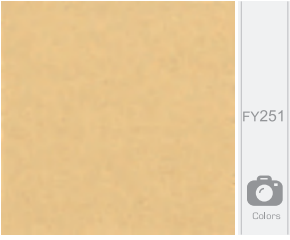
Colors



FY252



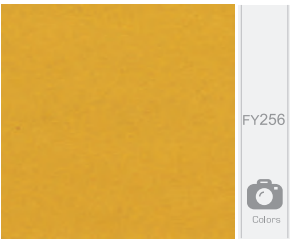
Colors



FY251



Colors



FY256



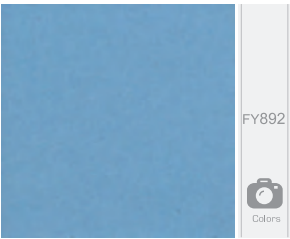
Colors



FY258



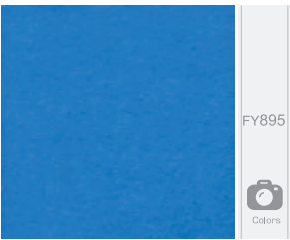
Colors



FY892



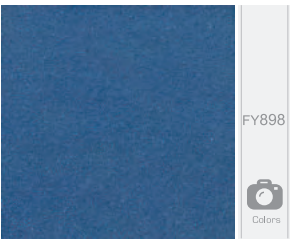
Colors



FY895



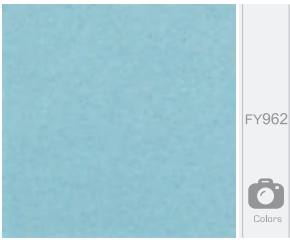
Colors



FY898



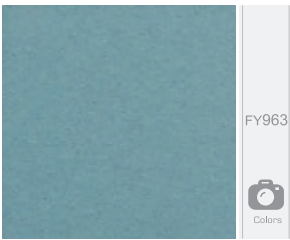
Colors



FY962



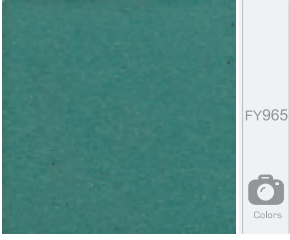
Colors



FY963



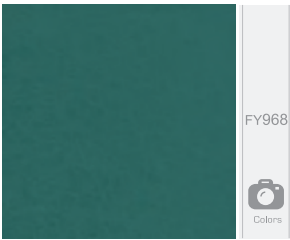
Colors



FY965



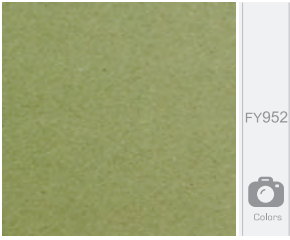
Colors



FY968



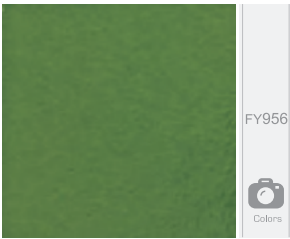
Colors



FY952



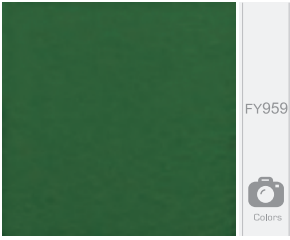
Colors



FY956



Colors



FY959



Colors

GLAZES SERIES

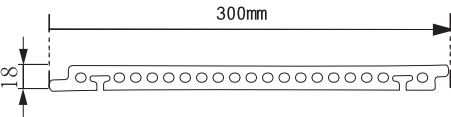
Glazing surface give more creative space for those designers who are ambitious in color design while at the same time fully capitalize on terracotta facade features of thermal insulation, soundproofing, energy savings.
LOPO is capable of providing highly-customized colors based on the diversity of the RAL color shade. With sophisticated firing and glazing techniques, LOPO glazing terracotta facade creates an outstanding performance in tolerating harsh chemicals and impact.

The colors and finishes shown represent a small sample from our extensive range of standard and custom possibilities. Colors shown are for illustration purposes only.

Colors

Terracotta Facade Panels

Glazes Series





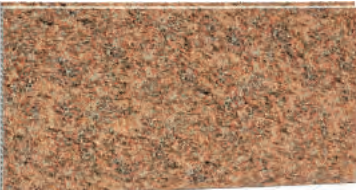
LOPO 3D INKJET TILE SERIES

In order to create more innovative new designs on terracotta tiles, LOPO embrace digital inkjet printing technology and develop LOPO 3D Inkjet Tile series. LOPO's 3D inkjet printer, can achieve an amazing replication of natural materials like marble and wood, as well as highly creative new designs. In addition to advanced printer and quality ink, LOPO's expertise in glazing process and firing techniques are also essential to guarantee the sophisticated effect and durability of tiles.

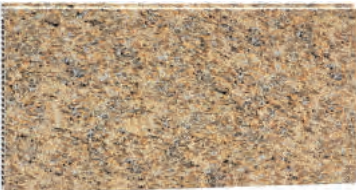
GRANITE SERIES



NO: PG009



NO: PG258



NO: PG252



NO: PG008

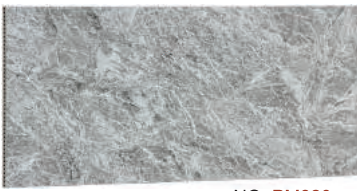


NO: PG727

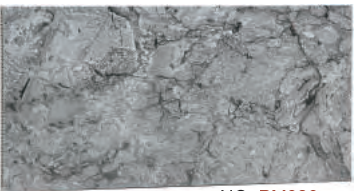


NO: PG725

MARBLE SERIES



NO: PM820



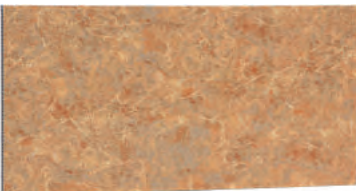
NO: PM826



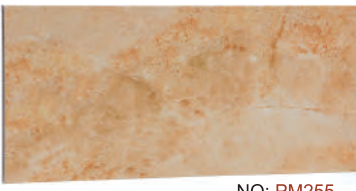
NO: PM552



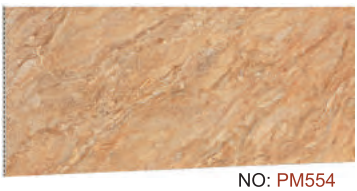
NO: PM550



NO: PM259



NO: PM255



NO: PM554



NO: PM256



NO: PM258

WOOD GRAIN SERIES



NO: PW627



NO: PW626



NO: PW625



TERRACOTTA BAGUETTE

With the widely use of terracotta facade cladding, terracotta baguette as special terracotta facade elements have become increasingly appealing to architects. They offer an excellent combination of both functionality and aesthetic appeal as shading and design elements. Terracotta baguettes are usually in the shape of tube with square, rectangular, triangular or oval cross-section. Multiple profiles and limitless colors of terracotta baguettes make themselves integrated naturally and artistically with both the whole building exterior wall and the interior decoration.

Features of LOPO Terracotta Baguette

- Dimensions:**
Length: Max. 1800mm
Height: Max. 100mm. The most commonly used size is 50mm.
Special dimensions are available on request.
- Shape:**
Special shapes or profiles are available on request.
The most commonly used shape is square, rectangular, triangular or oval cross-section.
- Colors and finishes:**
Wide range of colors are available on request.
Surface finishes: natural, glazed.

TERRACOTTA BAGUETTE

Max length: 1800mm



No. T4520003
SIZE:200X45mm



NO:T5050003
SIZE:LTY50X50mm



NO:T505026
SIZE:LTY50X50mm



NO:T505060
SIZE:LTY50X50mm



NO:TW5050617
SIZE:LTY50X50mm



NO:T5050883
SIZE:LTY50X50mm



NO:T100100886
SIZE:LTY100X100mm



NO:T356062
SIZE:LTY35X60mm



NO:T408563
SIZE:LTY40X85mm



NO:T4085001
SIZE:LTY40X85mm



NO:TH4085883
SIZE:LTY40X85mm



NO:T50100231
SIZE:LTY50X100mm



NO:T4090886
SIZE:LTY40X90mm



NO:TS40100768
SIZE:LTY40X100mm
CURVED BAGUETTE



NO:TY5080639
SIZE:LTY50X80mm



NO:T6012062
SIZE:LTY60X120mm



NO:T50130235
SIZE:LTY50X130mm



NO:T6010063
SIZE:LTY60X100mm



NO:T6012086
SIZE:LTY60X120mm



NO:T50150636
SIZE:LTY50X150mm



NO:T80160235
SIZE:LTY80X160mm



NO:T300100636
SIZE:LTY300X100mm



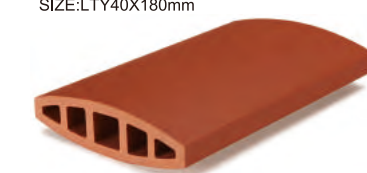
NO:T4018026
SIZE:LTY40X180mm



NO:T4018060
SIZE:LTY40X180mm



NO:T4018069
SIZE:LTY40X180mm



NO:T5018069
SIZE:LTY(20+50)X180mm



NO:T5018076
SIZE:LTY(20+50)X180mm



NO:T4018086
SIZE:LTY40X180mm



NO:T5018088
SIZE:LTY(20+50)X180mm



NO:T4018076
SIZE:LTY40X180mm

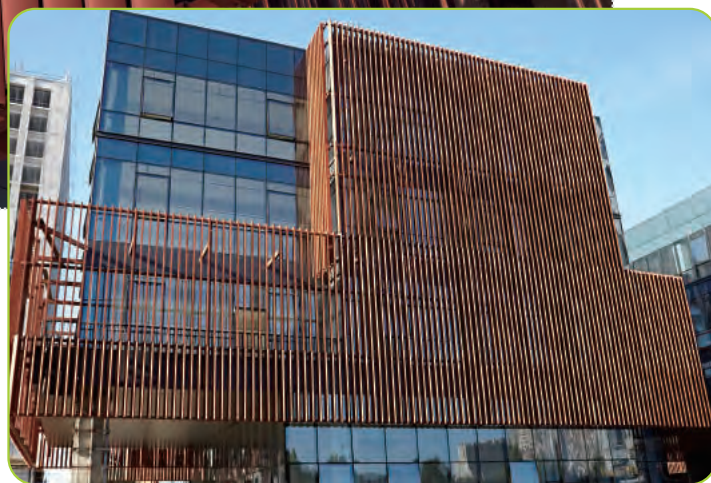


National Fitness Center of Zhoushan (2015)
Product: Terracotta Rainscreen, Terracotta Baguette
ITEM NO.: F4630884 FG4535884 FG4135632 FG4180632
T50150884 T5050884 TS1063884 TS35663884 T100100884
SIZE: 400x30 530x30 460x30 450x35 410x80 50x50
100x100 50x150 38x106mm



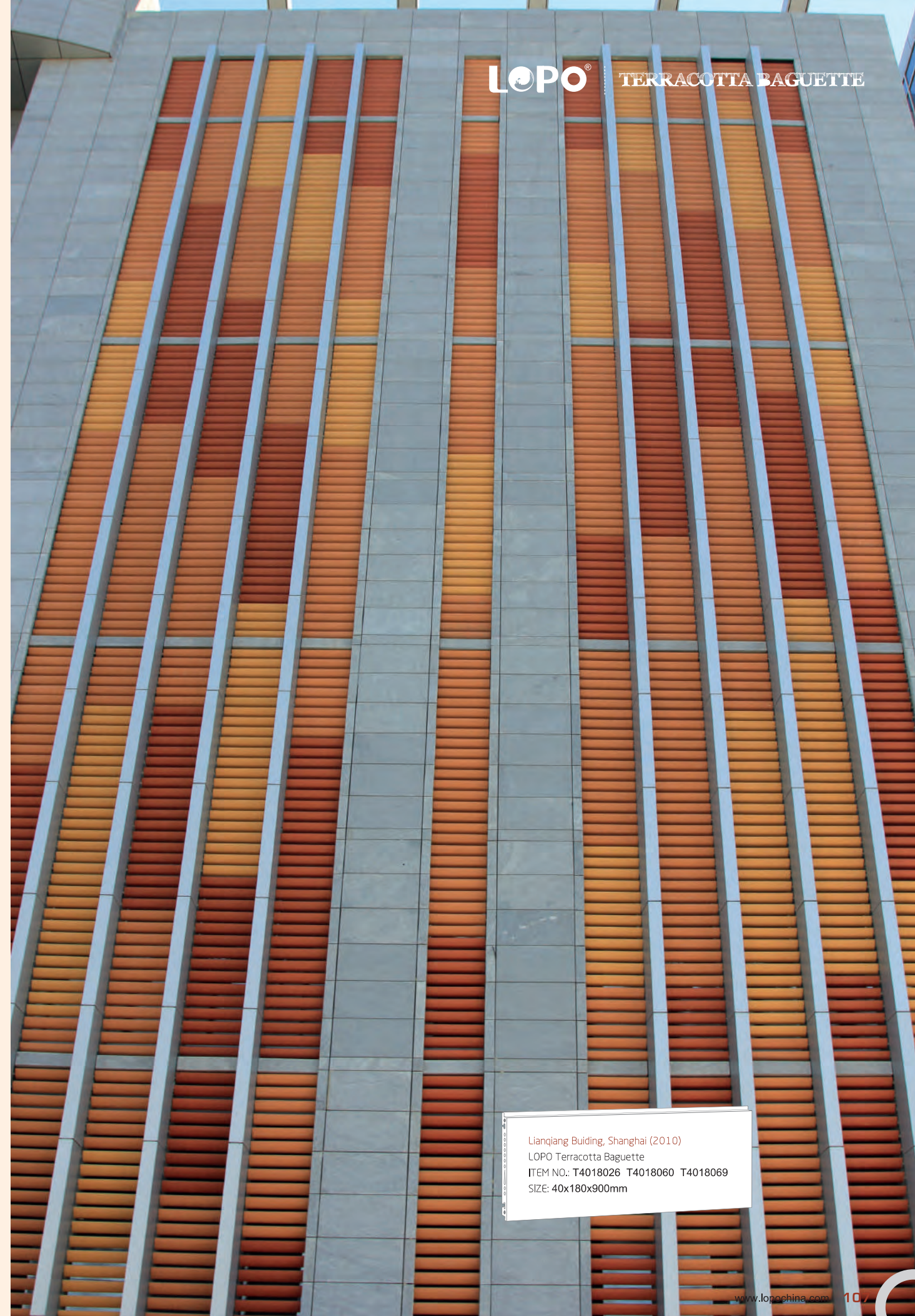
Greenland Qihang International (2014)
LOPO Terracotta Baguette
ITEM NO.: T50150636
SIZE: 50x150x1200mm

Architectural designers have preferred terracotta louver to cover part of glass curtain walls of the buildings. Red color of terracotta louver contrasts well with gray-blue color of glass, making the projects fashionable and concise. Terracotta louver makes the buildings seem looming, acts as sunshade, and to some extent reduces the real-object sense conveyed by the buildings in general. So that terracotta louver is useful and beautiful. Terracotta is installed in some angles according to the needs of sunshade and facade structure, making the whole facade full of vivid and interesting sense of linear lines.



Greenland Qihang International (2014)
LOPO Terracotta Baguette
ITEM NO.: T50150635
SIZE: 50x150x1200mm

Architectural designers have preferred terracotta louver to cover part of glass curtain walls of the buildings. Red color of terracotta louver contrasts well with gray-blue color of glass, making the projects fashionable and concise. Terracotta louver makes the buildings seem looming, acts as sunshade, and to some extent reduces the real-object sense conveyed by the buildings in general. So that terracotta louver is useful and beautiful. Terracotta is installed in some angles according to the needs of sunshade and facade structure, making the whole facade full of vivid and interesting sense of linear lines.



LOPO® TERRACOTTA BAGUETTE

Lianqiang Building, Shanghai (2010)
LOPO Terracotta Baguette
ITEM NO.: T4018026 T4018060 T4018069
SIZE: 40x180x900mm



Sales Center for Banan Linyuxi, Chongqing (2013)
LOPO Terracotta Square Baguette
ITEM NO.: T5050636
SIZE: 50x50mm



Xiamen University Shengnuo Institute for Non-ferrous
Metal Research (2013)
LOPO Terracotta Baguette
ITEM NO.: FG503463 / T5010062
SIZE: 40x85x900mm



Terracotta bricks and the clay's red color are the key elements of architectures in Southern China, and such material and color are important signs of the traditional architecture community in that region. The designer uses terracotta panels, terracotta baguette and terracotta bricks of a same color system, and mixes and matches them with flamed stone material, making the holistic style featured with a strong "Southern Fujian flavor". Traditional wooden shutters are replaced by square terracotta louver to enable the building to have better ventilation and lighting effects, while following the architecture's traditional features.

Xiamen University Shengnuo Institute for Non-ferrous
Metal Research (2013)
LOPO Terracotta Baguette
ITEM NO.: FG503463 / T5010062
SIZE: 40x85x900mm

Terracotta bricks and the clay's red color are the key elements of architectures in Southern China, and such material and color are important signs of the traditional architecture community in that region. The designer uses terracotta panels, terracotta baguette and terracotta bricks of a same color system, and mixes and matches them with flamed stone material, making the holistic style featured with a strong "Southern Fujian flavor". Traditional wooden shutters are replaced by square terracotta louver to enable the building to have better ventilation and lighting effects, while following the architecture's traditional features.